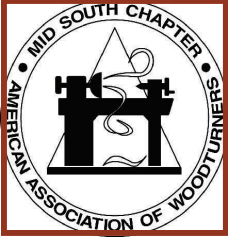


# The Mid South Woodturners Guild



## Turner's Talk

Bob Speier, Editor

February 2008



### What's Inside

Page 1

What's Coming Up

Page 2

General Meeting  
Minutes

President's Corner

Page 3

Up Coming Events

Past President

Page 4

Stuff

Page 5

Shop Talk

Page 6

Letter to the Editor

Thanks & Welcome's

Page 7

Advertising

Page 8

Tips & Helpful Ideas

Page 9

Tips & Helpful Ideas

### What's Coming Up ?

By Joan Kelly

#### *"Staved and Segmented How To"*

"I love to work with wood, and I live to turn!" says our February demonstrator Rick Cannon, who will share his secrets for making what he calls "staved segmented" bowls. Rick attended a class with Michael Modemat Arrowmont and learned the basics for his technique there. He has done some experimentation and some research on how others put wood together to turn and incorporated the processes into his own style.



Walnut Staircase

Rick allows that he uses his cabinet making tools and equipment to make some of the steps easier and faster, but promises that the basic technique for these bowls can be achieved with a bandsaw and a lathe. That's good news for those of us who do not have a shop full of cabinet making equipment!

Because there are multiple steps involved, Rick will bring examples of work in the various stages of development to illustrate the procedures for constructing the blanks prior to turning. This will undoubtedly be a demo that offers great insight into a complex, but not necessarily difficult, way to make a beautiful product.



Lacewood

**MSWG  
Board of Directors  
For 2008**

President

Larry Sefton

First V.P.

Dennis Paullus

Second V.P.

Steve Yeomans

Secretary

Don Wilcut

Treasurer

Matt Garner

Board Members

Bob Hobbs

Rick Gillespie

Webmaster

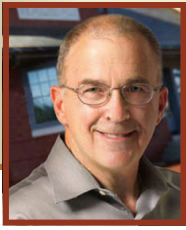
Trey Campbell

Newsletter Editor

Bob Speier

The Mid South Woodturners Guild is a proud chapter of the  
**AMERICAN ASSOCIATION OF WOODTURNERS**





## President's Corner

By  
Larry Sefton

2007 was a great year for MSWG! Make sure you read Cassandra Speier's account in this newsletter.

The new MSWG board met for the first time in mid-January and WOW! are they energized; or, as Bob Speier is fond of saying, "pumped" about what they want to do in 2008 and into the future. Steve Yeomans with Dennis Paullus' are working on our demonstration line-up for 2008. Please contact them with your suggestions.

If you are planning to attend the symposium in Richmond in June, you need to be making your hotel reservations now (the hosting hotel is already booked). Check the AAW web site, [www.woodturner.org](http://www.woodturner.org), for details. It costs nothing to make reservations and the cancellation policy gives you up to twenty-four hours before check-in to cancel. Also let Cassandra Speier know you plan on going because she is investigating the feasibility of group transportation. And, don't forget about Utah Woodturning Symposium in May (ask Don Wilcut about this event).

Joan Kelly's three legged stool demonstration at the January meeting was of professional quality and everyone learned something. Everyone appeared to enjoy our new location and all I heard were positive comments like, "the elevator is really nice," "the lighting is wonderful," "nice storage area," "love the clean restrooms," "great location for me", "this place gives us a better image and will help us grow," and "we even have a window."

February meeting reminder: It was agreed at the January meeting that we all are to bring in one or more of our **first** wood turnings for the instant gallery. This section of the instant gallery will be titled, "Remember Your First Turnings".

I personally am looking forward to our next demo on *Segmented Turning* by Rick Cannon. My wife is a quilter and she wants me to try segmented turning because it reminds her of a three dimensional quilt. She says that it would be "awesome" to have a woodturning and quilt look-a-like project. I may try some segmented turning for this purpose, which will also give me good justification to buy some new equipment!

See everyone at the February meeting.

## MSWG MEETING MINUTES January, 2007

President Sefton called meeting to order. He covered the following key items:

- Recognized the outgoing MSWG board, Cassandra Speier-Past President, Bob Speier – Secretary, Keith Burns – 1st VP, and Joan Kelly – 2nd VP
- Introduced the new MSWG members and their duties
- Reviewed the upcoming meeting agenda/dates for the February and March meetings. It was not certain whether MSWG would have a swap meet in April.
- Reminded everyone to send topics and information to Bob Speier for our Turner's Talk
- If you have not received an email in the last couple weeks then we do not have your correct email address. Please update your email address with us.
- Introduced new MSWG business cards and requested that everyone take several and pass them out to promote the club.
- Copy of newsletter on the table if you did not get one or do not have access to a computer. The newsletter and past newsletters can be found on our website.
- Discussion about how great the 2007 Christmas party was and that Bob Speier did such a good job at auctioning off the items that he was contacted by HSN to interview for a job.

## *Planning Ahead*

What better way to help the Mid South Woodturners Guild than by making a charitable bequest in your will or estate planning process? AAW has provided their members the information on their website for over a year. It came to mind the other day "why not do the same for MSWG?" What better way than to leave a legacy in your name?

Many of you, like Sandi and I, have a shop full of both woodworking and turning tools and no real someone to leave them to. We have wrestled with this dilemma for quite some time. We have no kids and or no one to leave them to that would appreciate them to their fullest. I'm not saying don't leave them to AAW but rather consider MSWG as well.

I have no legal guidance other than to say checkout the article on the AAW website <http://www.woodturner.org/org/bequest/>. The article gives examples on what to do. The most important thing is to contact your attorney and make the bequests in you will or estate planning process.

\* \* \* \* \*

## *UPCOMING EVENTS*

### 2008

*Feb 23rd Segmented Bowl - Rick Cannon*

*March 22nd - Ring Master - Rick Gillespie*

*April 2nd - Annual Swap Meet*

## *A Message from our Past President*

As we roll into yet another year with which so much to look forward, please indulge me as I reflect back to 2007 and what, we as MSWG, accomplished.

Three new board members joined the ranks of leadership: Larry Sefton, Bob Hobbs and Matt Garner. This is important for many reasons but key is the ability to be frequently rotate club members thorough the board to energize and broaden the scope of leadership.

April found MSWG sponsoring the 1st annual Swap Meet. While it may not have turned out as wildly successful as we had hoped, everyone made a little money and fun was had by all! We plan for this to be an annual event!

Club demonstrations were 12 great months of showmanship and diversity! Joan Kelly showing off her spiral goblets; Larry Sefton teaching us that airbrushing is indeed a practiced art and John Williams tuning Street Clocks just to name a few.

In addition to the regular demos, MSWG sponsored two guest turners in 2007. Travis Stinson demo'd in July showing off his hollowing jig to fit the mini lathe. It was an enlightening demo offering great tips for new and experienced turners alike. The coupe-de-grace was our August demo with the world famous Binh Pho! For those who attended it was a weekend we will not forget! Not only was the demo itself packed filled with great instruction, Binh also added his delightful philosophy on life and art! Binh is as entertaining as he a skilled and thorough teacher!

The highlight of the year was the Ross Gallery-Christian Brothers University sponsored, Beneath the Bark: The Art of MSWG, 20 members displayed 57 turned pieces, ranging from 7 year-old Ben Campbell's 'designer twist pen' to Dennis Paullus' monumental box elder natural edge bowl! Joan Kelly, Bill Siler and curator Brother Robert Werle worked tirelessly to make this event a huge success! MSWG really stepped up and succeeded in demonstrating that woodturning is not just

Continued pg 4

## *MSWG MEETING MINUTES continued*

- The board approved 2008 MSWG meeting calendar. A copy is on the table and the meeting dates will be added to the web.
- Secretary was not present and therefore we did not review/approve December 2007 meeting minutes.
- In early January we applied to AAW for a \$1,500 educational grant. We will be notified one way or the other by the end of February if we receive the grant. As far as we know the club has never received such a grant.
- Introduction of guests and new members. We had 34 total attendees at the meeting.

Treasurer: Matt Garner reported that on January 1, 2007 we had a balance of \$2,344.74 and on December 31, 2007 we had an ending balance of \$2,324.78. On January 2, 2008 we established an educational fund for bringing in professional woodturners. The donations from the Christmas Party auction initiated this fund now has \$682.00. Therefore the standard operating account is now at \$1,642.68; our education fund is \$682.00; for a total of \$2,324.68.

Raffle: Rick Gillespie announced this meetings raffle and the new procedure. The raffle will be held inside in the lobby area outside our meeting room.

Joan Kelly talked about CBU and the MSWG having a permanent collection at CBU. She stated that she was leading a group/committee to come up with viable opinions on how this would be done. They will present the opinions to the club for a vote.

Larry Sefton then introduced Joan Kelly demonstrating a Three Legged Stool.

Instant gallery: Everyone got to show and tell about their piece, with Dennis filling in where needed. We got several positive comments about this new approach.

Submitted by; Larry Sefton, President

## *Past President continued*

functional but truly art!.

Octoberfest was another great fall celebration! Once again it was a day spent, not only turning, but carving and visiting with the members from the local 'Scrollers' club!

Volunteerism is truly the gauge of a cohesive organization....thank you to all who invested their time and attention to making 2007 a great year for the club.

Lastly, on behalf of myself, Bob, Joan and Keith thank you for making our two years as MSWG board members truly memorable!

Thanks for all your support, Cassandra Speier

## *Mid South Woodturners commit to Recycling*



Joan Kelly, as many of us are, is committed to recycling. Watch Al Gore's movie on the impact of global warming or the National Geographic's Six Degree's and it will change your mind on the need to do the right thing. Joan has taken it upon her self to start a can and bottle recycling system for the club. All you need to do is place your EMPTY cans and bottles in the designated can which can then be taken downstairs to the recycle center right there at the Municipal Center. Located on the North side of Stage Road at Bartlett Boulevard, between the Bartlett Station Municipal Center (5868 Stage Road) and Walgreens. This center is open 24/7. Assistance is available Monday - Saturday, 9:00 am to 5:00 pm.

Below is a link to "Recycle it Now" a website that helps explain the needs and process' of recycling.

<http://www.recycleitnow.net/environment/recycling.asp?menu=2>



# Shop Talk *By Bob Speier*

## *the TAW Symposium, Nashville*

We all ( Don & Laura Wilcut, Tate Thomas, Steve Yeomans, Skip Wilburn, Rick Cannon and his wife and of course your Editor) seemed to arrive on Thursday afternoon at the Radisson Opryland Hotel in Nashville TN. Consequently we missed the first meeting at our new place in Bartlett. The Demo's for the Symposium didn't start



until Friday at 9:30 am. So chitchat and the vendor room were on the agenda. Steve Yeomans had to make three trips to our room to get rid of all his purchases. I, on the other hand, didn't buy a thing.

The demonstrators for the two-day Symposium were David Ellsworth, Nick Cook, Andy Woodard and Ernie Conover. The Crew split up to the different rooms.

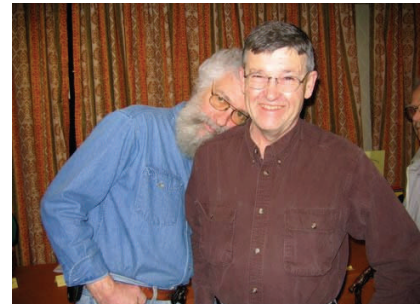
Steve and I went to watch David Ellsworth turn a hollow form. What a treat as you can make it look so easy. I'd and none are true. He's a demonstrator. Another doing platters, which he tips, which will help me in reason we go to these



imagine, he heard many things about David the nicest guy and a very good poplar demo was Andy Woodard does so well. I picked up several the future. I guess that's the things.



TAW did a great job putting the symposium together with a great turnout (145 approximately). We didn't stay for the banquet Saturday night, which I found out later, was a BIG success. The auction was to bring in a great deal of money, which they use for scholarships for their members. All of the demonstrators donated to the auction as did one of our own members Rick Cannon, way to go Rick! I do know the pieces David Ellsworth donated brought in went for \$1,000 and \$1,200 respectfully. We can do this to guys. It was a good time for all!



## Letter to the Editor

In the most recent newsletter, the new president (Larry Sefton) wrote an article about being safe in our demonstrations at the club and in our shops. Since Larry is an insurance inspector, and has a tendency to be overly cautious at times. This can take a lot of the excitement out of turning. Woodturning is a lot like NASCAR, in that people are drawn to the excitement but at the same time deep down they are hoping to see something happen. Some how, there are those of us who seem to take pleasure in watching demonstrators sweat. Granted we don't want to see any major accidents, but seeing a small bowl become a flying saucer can be down right entertaining. At least it keeps the guys on the front row awake. Lets be honest, who of us when hearing a story about a minor accident that produced a visible scar is not tempted to say "Did I show you the scar I got from...". It's almost like a rite of passage. Until you've got a few scars, a mild hearing loss in one or both ears, and a few hair rising stories, you're not really a true woodworker. If you haven't smelled the wonderful difference between cedar and pine, then your dust collection system is robbing you of one of the true joys of woodworking. When I can't be out in the shop for an extended period of time, I start to suffer from withdrawals. I find that taking a deep breath from a bag full of sawdust can do wonders, and if you are where it's now convenient to pull out a bag, then try a pinch between your cheek and gum. I find the more exotic woods to have a most interesting flavor, just don't swallow. I know that Larry is probably right, after all it is his job but I say let the chips fly and let them fall where they may. Get out in the shop and make some sawdust...it's worth the effort!

From: Rick Gillespie

A member who has done everything wrong at least twice just to make sure it was the wrong way to do it the first time.

p.s. Yes I still have all my fingers, but they do have a few scars. Hey, did I tell you about the time I was turning a bowl with a roughing gouge...etc. etc. etc.

## Thanks & Welcomes

We should take time to thank those that continue to help us each and every month by donating to the raffle or just sticking around to help clean up: **Norm Hill** donated pieces of corian and he's not even a member, it is also my understanding that **Norm** went above and beyond the call of duty for the MSWG, **Brad McCullun** brought the tools boxes, and was a big help cleaning up. **Glenn Alexander** helped out by bring in bandsaw blades for the raffle. **Hubert Davis**, pieces of Osage Orange, **Rick Gillespie** pieces of Cherry, **Dennis Paullus** Boxelder and **Charley Biggs** from **Colco's** brought in a very nice piece of Ramone Burl. Last but certainly not least **Bill McMillen** logs of Chinese Chestnut.

Let's all welcome new members: **Charley Biggs, Ken Walls, William Vansciver** and **Mike Tylman**.



There are many who say "I don't get any benefit from AAW so why should I join?" But we participate in the chat rooms, read the articles on the their website and so on. This is the time of year, as in our own, club that the annual dues are needed. Please consider joining the national club, [American Association of Woodturners](http://www.aaawoodturners.org), well worth the money and you won't be sorry.

The Mid South Woodturners Guild is a not-for-profit organization formed to promote and encourage the art of woodturning and, in doing so, promote and encourage the art and craft of woodturning in general. Membership is open to anyone.

*Classifieds*

For Sale: 60" Oneway Bed Extension with Leg. Fits both the Oneway 20" and 24" Lathes with 44" spindle height. Mint condition. Lathe and duplicator shown in photo not included. New retail is \$995.00. Asking \$600.00. Contact Keith Burns: Daytime 774-8830, evenings and weekends 853-6219 or email: [keithandjudi@earthlink.net](mailto:keithandjudi@earthlink.net)



*Links to help you out*

**CRAFT SUPPLIES USA**  
— THE WOODTURNERS CATALOG —

[www.woodturnerscatalog.com/](http://www.woodturnerscatalog.com/)



[www.packardwoodworks.com/](http://www.packardwoodworks.com/)

*MSWG Lathe and chucks are made by*



**THE WOODWORK SHOP, INC.**  
Professional Tools, Fine Hardwoods & Custom Woodwork

*8500 Wolf Lake Drive Suite #1*

***AAW Club Members Special Discount Coupon for January & February 2008***

*Thanks you for supporting AAW & your local AAW Woodturning Club as well as [Don Pencil Woodturning](http://www.donpencil.com).*

***Take 20% off all Don Pencil Woodturning Products (blems, seconds and sc100p not included)***

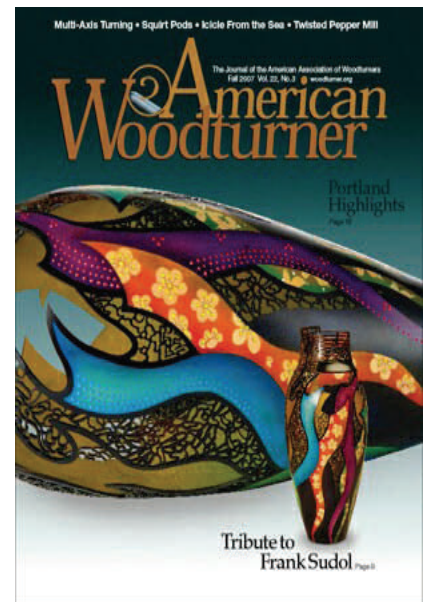
*When checking out be sure to use coupon code*

**# AAW8115SP**

**714 709-3281 360 376-4586**

**or**

***www.donpencil.com***







## *Tips & Helpful Ideas*

*From Wikipedia,  
the free Encyclopedia*



Segmented turning is turning on a [lathe](#) where the initial work piece is composed of multiple glued-together parts. The process involves gluing up several pieces of wood to create patterns and visual effects in turned projects.

Segmented turning is also known as polychromatic turning.

In traditional wood turning, the template is a single piece of wood. The size, grain orientation and colors of the wood will frame how it can be turned into an object like a bowl, platter, or vase. With segmented turning, the size and patterns are limited only by imagination, skill and patience.

While the vast majority of segmented turnings are vessels of one sort or another, strictly speaking, any turned object comprising multiple pieces of glued wood could be classified as a segmented turning. Examples include pens, salt and pepper mills, and rolling pins. By cutting and re-assembling pieces after they are turned, unique forms can be created, crossing over to pure art. See for example, the work of Malcolm Tibbetts.

In addition to design skills, segmented turning demands precision woodworking skills as well as turning skills. Design and construction of a bowl blank--the wood piece mounted on the lathe for turning a vessel--requires angled miter joints cut to tolerances of as little as a tenth of one degree or better.

There are essentially two different techniques for constructing a bowl blank, ring construction and stave construction.

Ring construction is the most common. A ring-constructed blank comprises rings glued in a cylindrical stack. Though a platter or shallow bowl could be made from a single ring, stacking many rings is more typical. Apart from a lid or a base made and added after the fact, the height of the finished piece is a function of number of rings, and the height of each ring, which of course can vary for affect. Each ring comprises three or more pieces cut and glued to form a triangle, square, pentagon, hexagon, etc. The more pieces in a ring, the more challenging for the turner, because there are more opportunities for precision errors--gaps and misalignments in the joints between pieces. The individual pieces making up a ring themselves are often assembled from smaller pieces of contrasting or complementary colors to achieve striking patterns in the finished piece. This too adds to the complexity and challenge for the turner.

Native American pottery, basket, and textile designs, particularly from the southwest U.S., frequently inspire form and design features. These patterns are often geometric in design and thus are easier to recreate than more fluid forms found in nature.



## *Tips & Helpful Ideas*

*continued*

Stave constructions are assembled like barrels--cylinders constructed from multiple long, vertically-oriented pieces. As a rule, the grain in a ring-constructed turning runs horizontally in the finished piece, while the grain in a stave-constructed turning runs vertically, from top to bottom.

A segmented turning can combine ring construction, stave construction, and solid, non-segmented wood as well in a single piece. However, wood expands and contracts in the direction perpendicular to its grain as a function of its moisture content, itself a function of ambient humidity. In this case, during design and assembly, the turner has to be mindful of the impact on long term structural integrity of assembling the constituent pieces into incompatible, non-parallel grain directions.

An important variation of the ring construction technique is known as "bowl from a board." Imagine a flat, square board bisected to create two identical rectangles, like two twin beds placed side-by-side to form a king-sized, square bed. Rings are created by cutting concentric semi-circles from each of the two boards, one concentric half-ring a mirrored-shape of a half-ring from the other. The semi-circles are typically cut with a bandsaw, but a scrollsaw, jig-saw, or coping saw would work. The blade of the saw used to cut the semi-circles is set at an angle from the vertical, typically 45-60 degrees, such that when each mirrored pair is glued together to form a complete ring, the rings are shaped like cross sections of a cone. The rings are then stacked to create a cone-shaped blank. An incredible variety of visual effects can be achieved as a function of how the boards are constructed before the concentric rings are cut.

There are ongoing discussions as to whether turning is a trade, craft, or an art form. Turning in its original form was certainly utilitarian. If your last name is "Turner" chances are there was a production wood turner some generations ago in your family tree. Many turners produce spindle work for furniture, architectural work, toys, and of course, bowls. But in recent years, many artists use turned pieces as a canvas for carving, pyrography, gold leaf work, inlay, stain and painting.

Useful links for segmented turning:

- [Segmented Turning web site.](#)
- [MarleyTurned web site](#)
- [Malcolm Tibbetts's website](#)
- [Steve Bernstein's Gallery](#)

*See you Saturday morning Feb 23rd at our new location. Rick Cannon will be our featured demonstrator for the meeting.*