

# The Mid South Woodturners Guild



## Turner's Talk

Bob Speier, Editor

April 2009



### What's Inside

#### Page 1

- What's Coming Up!

#### Page 2

- President's Corner
- Coming Events

#### Page 3

- General Meeting Minutes

#### Page 4

- Shop Talk

#### Page 5 - 6

- Getting to know the Pro's

#### Page 7

- Misc.

#### Page 8

- Helpful Ideas & Tips

#### Page 9

- Flashbacks



## What's Coming Up !

By Joan Kelly

### Turn and Burn with Larry Sefton



Larry Sefton, our club's immediate past president, is our featured demonstrator this month. Larry has been turning just over five years and has taken a serious interest in embellishment techniques. He is an enthusiastic regular at John C. Campbell Folk School where he has studied with several well known turners, including Graeme Priddle from New Zealand. Graeme's influence, especially with burning using brands, will be a large part of Larry's demo.

The session will begin with the turning process: a wide rim bowl. Larry will continue with creative embellishment using brands.

Perhaps due to his profession as a safety expert for an insurance company, Larry is meticulous about details. His demo is sure to be informative as well as inspiring. Join us on Saturday, April 25, 9:00 - noon.

### President's Pick



Mike Maffitt  
Toothpick Holders

AAW Spring 2009  
Journal  
Join or Renew now !



The Mid South Woodturners Guild is a proud chapter of the  
**AMERICAN ASSOCIATION OF WOODTURNERS**



*President's Corner*

Recently, as you know, I've been promoting the purchase of new Audio/Video equipment. Not everyone can see the "what's goin' on"

during our demonstrations, let alone see it with any kind of quality. I believe the vast majority of our members understand the need for, and the benefits of purchase.

MSWG is in pretty good financial condition for general operations; however, we don't have the funds to run out and purchase new A/V equipment.

At our last general meeting I mentioned that Rick and Polly Stone had suggested a pool party and BBQ to raise money for this cause. Good idea, however, it also came to our attention that some members "didn't want to go to some damn party" but would be MORE than happy to donate to "the cause" (as MSWG was handed a check for \$50).

During the April 4th Malcolm Tibbetts demo (which was an outstanding success), attendees were offered a rebate (we had more attendees than expected which raised our total revenues beyond the stated break even goal). Many chose to donate their rebate directly to "the cause."

With the donation of the \$50 mentioned above, another member donation of \$100, and the donated rebates, we now have approximately \$700 in the MSWG A/V fund.

Parties are fun (think OctoberFest) but they require a LOT of work to plan and hold. Sandi Speier has suggested that we have a "Virtual Pool Party." So, put on your sunglasses, and join in our virtual fund-raising party. You can have a great time without going anywhere!

What this all boils down to is a straight out request for donations of any size to "the cause" (more is always better than less, but less is better than nothing). Be proud, be generous, and break out those checkbooks for the MSWG A/V fund.

Thanks to all that attended the Malcolm Tibbetts and John Jordon demos. What a great example of the type of demo's we can see in the future.

*Please don't forget to bring your President's Challenge for Eggs to the April meeting.*

**MSWG**  
**Board of Directors**  
**for 2009**

<u>President</u> Bob Speier	<u>Librarian</u> Bill McMillen
<u>First V.P.</u> Dennis Paullus	<u>Board Members</u> Rick Gillespie Rick Stone
<u>Secretary</u> Nancy Boatwright	<u>Webmaster</u> Trey Campbell
<u>Treasurer</u> Matt Garner	<u>Newsletter Editor</u> Bob Speier

**UPCOMING EVENTS**  
**2009**

- **April 25th**  
Larry Sefton—wide rim bowl w/branding
- **May 23rd**  
Club Member—Emmett Manley  
Utah Woodturning Symposium
- **June 27th**  
AAW Symposium, Albuquerque, NM
- **July 25th - TBA**

## *MSWG MEETING MINUTES*

### *March 28th, 2009*

#### **Call to Order and Welcome**

The meeting was called to order at 9:00 a.m. by Bob Speier, President, who welcomed the members, visitors and new members. Visitors included Don Chandler and Bill O'Rork. There were two new members: Thane Duncan and Charles Smothers. Nametags were given to those who joined or renewed membership at the February meeting. There were 55 people in attendance.

#### **Financial Report**

Matt Garner, Treasurer, gave the financial report.

General fund balance	\$2,337.74
Education fund balance	\$1,825.36

He is working on paperwork for the club to have 501(c)3 not-for-profit status that would allow memberships and donations to be tax deductible.

#### **Mid-South Perspective 2009**

In 2008, the club turned Japanese rice bowls from blanks provided by Dennis Paullus for a Mid-South Perspective. Joan Kelly explained that for 2009, Vice President Paullus has provided 5" x 5" x 2" kiln-dried, maple blanks for \$6 each. Anyone who wishes to take a blank should pay for the blanks through the club treasury. The blank can be turned into anything as long as the wood is the dominant feature. Those who take blanks should sign the sign-in sheet and give their money to Treasurer Garner. The deadline for turning the blanks is the June meeting. Joan Kelly will do her best to get a public show to display the collection. This will focus on the purpose of the club.

#### **Malcolm Tibbetts**

Larry Sefton reminded everyone that Malcolm Tibbetts will be demonstrating segmented turning on Saturday, April 4<sup>th</sup>. Twenty-eight people had signed up, six from out of town.

#### **Audio-Visual Equipment**

Polly and Rick Stone suggested hosting a luau with games and a silent auction for raising funds for new audio-visual equipment. Nancy Boatwright also had some suggestions.

#### **Announcements**

President Speier reminded everyone that the President's Challenge for April is turned eggs.

President Speier thanked Joel Benson for hosting John and Vicki Jordan.

Rick Gillespie, board member, announced that if you don't have a "smiley face" on your nametag then you haven't had your photo taken for the roster.

Board member Gillespie also noted that the old library cart and its cover will be included in the raffle.

Board member Gillespie announced that club members are invited to the Woodworkers' Club on April 11th for a wood-grading school. There will be a mini-course on lumber grading. An email will be sent out to club members.

#### **Demo**

Vice President Paullus introduced John Jordan. The full day demonstration was paid for by club members with funds raised through the raffle, the Mid-South Perspectives auction, and grant funds. The demo resumed after a lunch break and the meeting was adjourned after the demo was completed.

#### **Raffle**

The monthly raffle was held before the lunch break.

Respectfully submitted, Nancy J. Boatwright,  
Secretary

*Message from AAW  
Board Member **Binh Pho***

Three years ago, the POP (Professional Outreach Program) was launched by the AAW board. As one of the inaugural committee members, I must be honest that in the beginning we had little clue what we were doing - we only knew we needed to do something to help the members who wanted to move beyond the amateur level to become professional woodturners. Toward this end, we created our mission statement:

*"The mission of the Professional Outreach Program is to promote a greater understanding of professionalism within the field of contemporary woodturning."*

We began building from that mission statement and I believe we have come a long way since. If you are on the fence about coming to Albuquerque, I hope the following events will inspire you to send in your registration and make plans to head to New Mexico this summer.

In addition to the outstanding US and International demonstrators that are lined up, we have rotations free of flying wood chips organized by POP. Attending won't get your hands and clothes dirty, but it will get your creative juices flowing. I don't have sufficient space to list all the POP rotations, but here are a few to wet your appetite:

- Professionalism: Mark Sfirri
- 30 Years of Marketing in the Field: Jerry and Deborah Kermode
- Ask Us Anything: Binh Pho, Alain Mailland and Bill Luce: when you can't find the answer in Google, then come here....we have the answer.
- What Makes a Good Demonstration, Professionalism in Conveying the Message: Betty Scarpino, Bonnie Klein, Trent Bosch, Michael Mocho
- State of the Art in Woodturning: David Ellsworth and Terry Martin

- From Garage to Gallery: Strategies for a Career in Creative Woodturning: Terry Martin and Kevin Wallace

In case you missed our Resident Artist program in Richmond last year, in Albuquerque we will introduce this year's Resident Artist: Jean Francois Escoulen. That's right, he is French, but he sure does know how to turn! You may be asking, "so what is a Resident Artist anyway?" The short answer is he has one rotation only but it lasts 3 days. The Resident Artist will design a fairly complex project, which will begin on the first day and be completed by the end of the symposium. The project will then be auctioned off. Speaking about auctions -how about the Instant Gallery? **WOW!!!** It just keeps getting better and better every year. not to mention we will have several awards for the pieces in the Instant Gallery:

3 Purchase Awards [up to three can be selected varying on funds spent] there is a minimum of \$2,800 and a maximum of \$ 5,800 available

6 Excellence Awards for \$500 each

2 Collegian Awards [18 and up- must be full time student] for \$300 each

2 Youth Awards [under 18] for \$300 each

If 800 to 1000 pieces in the Instant Gallery are still not enough for your hungry eyes, how about the POP Exhibit "The Spindle", a special feature exhibit of Gary Knox Bennett and Merryll Saylan and the AAW juried exhibit "Spirit of the Southwest".

I have been invited and also in attendance at many Regional symposiums and, make no mistake about it, they are all outstanding symposiums - well run and featured superb presenters. Many people tell me they like Regional symposiums better, due to their smaller size, making it easier to get around and still have the same quality of demonstration. "Why fight the crowd, stay with the Regional", they say. So what's missing? The crowd! You never know for

**Continued on page 10**

## Getting to know the "Pro's"

### Bonnie Klein – Jon Magill Page 1 of 2

**Bonnie Klein** — Renton, Washington, has been involved with woodturning since the early 1980's. She produced the Klein Lathe, the Klein Threading Jig, DVD's and a recent project book. She has demonstrated across the US and around the world. She served 6 years on the AAW board and was awarded an Honorary Lifetime Membership in 2003. Bonnie has been interested in and demonstrated Ornamental Turning for nearly 20 years.



**Jon Magill** — Clinton, Washington, has been obsessed with Ornamental Turning for ten years; predominately producing threaded boxes with ornamentation. His recent articles and published MDF rose engine lathe plans have enabled more turners to try Ornamental Turning.



#### Rev Up Your Rose Engines...

The **MDF rose engine lathe** provides a place to start exploring Ornamental Turning, or OT. Prior to the publication of the plans for the MDF rose engine, there was no simple, inexpensive way to give OT a try. Download the plans and instructions from the AAW website. See the "*Building An MDF Rose Engine Lathe*" handout for details.

Think of OT as another technique for surface decoration. Here are some projects, advanced tips and techniques to get you on the path to exploring OT...

#### **Some Hints To You Started Off on the Right Foot...**

- Make a paper chuck and pencil/pen holder — this will help you see the patterns and plan before you cut
- Pre-turn material — OT cutters are s-l-o-w so remove waste wood ahead of time judiciously
- Adjust cutter center height and rubber — make test cut, use a magnifier, it has to be dead-on for face cuts
- Adjust spring/bungee tension — enough but not too much, occasionally add a drop of oil if using a friction rubber
- Check the range of travel of your sliderest before starting a cut — will you be able to reach the end of your cut?
- Confirm your fading stop and phasing pin positions before you start cutting
- Start the work-piece rotating before engaging the cutter, back off the cutter before stopping your work-piece

#### **Slightly More Advanced Techniques...**

Center the headstock — drop the centering block behind the headstock, slide the fading stop down for circular cuts

Rubber and center height of the cutter — if you move the rubber, you need to adjust the center height of your cutter

Both sides of center — familiarize yourself with the patterns produced on each side of center with each rosette

Cutter rotation — cut with the grain and down hill when possible, direction of feed, reversing belt driven cutters

Phasing — use phasing to alter the positions of a pattern, phasing rotates the pattern relative to another cut

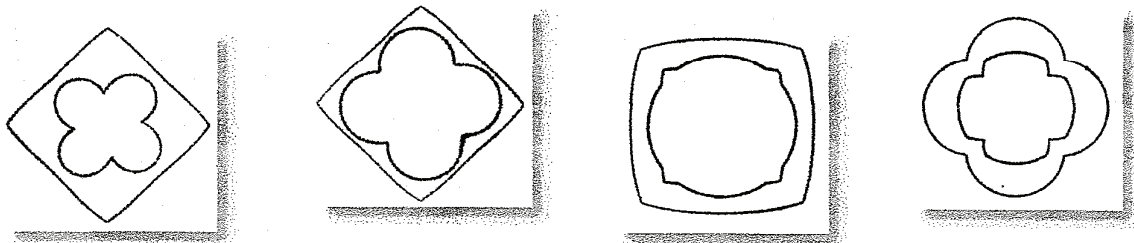
Fading stop — use fading to modify the patterns, or sort of "truncate" the pattern

Double rubbers — allow use of two rosettes at once, contribution of each rosette can be controlled

Rubber stop — a stop block for the lower rubber allows independent fine adjustment of the upper rubber

Cutting frames — HCF, VCF, UCF, ECF, drill spindle, others...

Chucks — eccentric chuck, dome chuck, others...



Continued on page 6

## Getting to know the "Pro's"

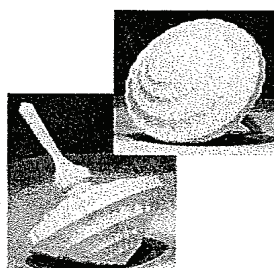
### Bonnie Klein – Jon Magill Page 2 of 2

#### Rev Up Your Rose Engines... (cont.)

##### Projects Ideas and Techniques

###### Purse Mirrors

- Pre-turn a recess for the mirror on your regular lathe
- Tower jaws on your chuck will provide access to both the front and back, as well as the edges, allowing you to decorate the entire mirror in one mounting
- Use double-stick tape to mount the mirror when done decorating

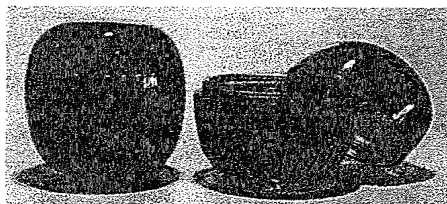
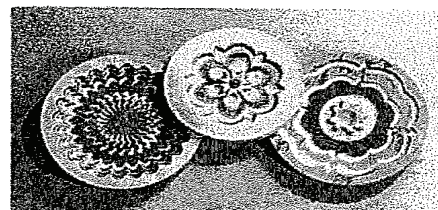


###### Spinning Tops

- Turn basic shape of top on regular lathe or with rose engine headstock centered
- Multi-piece assembly will allow for decorations closer to transition points
- Plan your sequence of processes to allow decorating various surfaces
- Simple tops can be completed in one mounting with the pointy-end away from the chuck

###### Multi-color/Multi-layer Inserts

- Prepare blanks on the rose engine to ensure flatness
- Test and use glue compatible with selected woods to avoid bleeding
- Glue up layers thick enough to match your test cut depth
- Cut the outer edge on rose engine, with headstock centered, to ensure concentricity



###### Alternative Materials

- Use cast acrylic, extruded acrylic tends to "smear"
- For acrylic, epoxies and other plastics, use slower cutter speeds to avoid overheating
- Lubricants can help produce a good finish on your cut
- Use bone as an excellent substitute for traditional ivory, sold in pet stores already processed

###### To learn more about Ornamental Turning...

Join OTI, Ornamental Turners International. OTI is an AAW chapter which meets once every two years. Meetings alternate between East coast, Central U.S. and West coast. The next meeting will be September 26th - 28th, 2008 in St. Louis. You must be a member to attend the meeting. A newsletter is sent quarterly. Membership is \$35 per year. Information on joining is at: <http://www.ornamentaltturners.org/>

Unfortunately there are not many books, and certainly no contemporary books, on rose engine turning. If you join OTI, a CD is available with past articles from the English group, The Society of Ornamental Turners or SOT. That CD has a book specifically on using the rose engine; *The Rose Engine Lathe, Its History, Development, and Modern Use*, by Norman Tweddle (August 1950). Other books on ornamental turning barely mention rose engines as they were so rare.

###### Questions?

Jon Magill — <http://www.whidbeyworks.com> — [jon@whidbeyworks.com](mailto:jon@whidbeyworks.com) — (360) 579-4101  
 Bonnie Klein — <http://www.bonnieklein.com> — [blklein96@aol.com](mailto:blklein96@aol.com) — (425) 226-5937

### Welcome New Members / Guests

Visitors included Don Chandler and Bill O'Rourk. There were two new members: Thane Duncan and Charles Smothers. Nametags were given to those who joined or renewed membership at the February meeting.

### Classifieds

**Have something  
you want to sell ?  
Place an ad here  
and get world wide  
coverage**

### What others where doing !

Nancy Boatwright just finished a class at Arrowmont and Rick Cannon is there as we speak taking a week long class with, guess who? Malcolm Tibbetts.

### *Just a little Humor*

My wife sat down on the couch next to me as I was flipping channels. She asked, 'What's on the TV?' I said, 'Dust.' And then the fight started...

My wife and I are watching "Who Wants To Be A Millionaire" while we were in bed. I turned to her and said, "Do you want to have sex?" "No," she answered. I asked, "Is that your final answer?" She didn't even look at me this time, simply saying, "Yes." So I said, "Then I'd like to phone a friend." And then the fight started.....

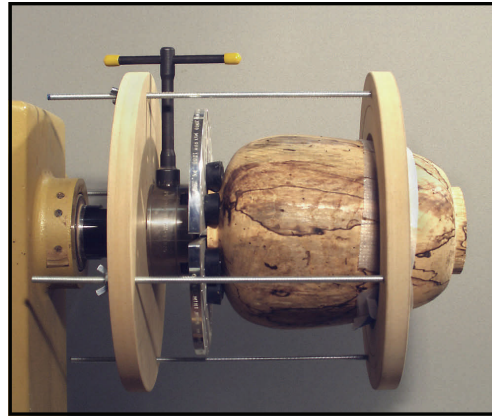
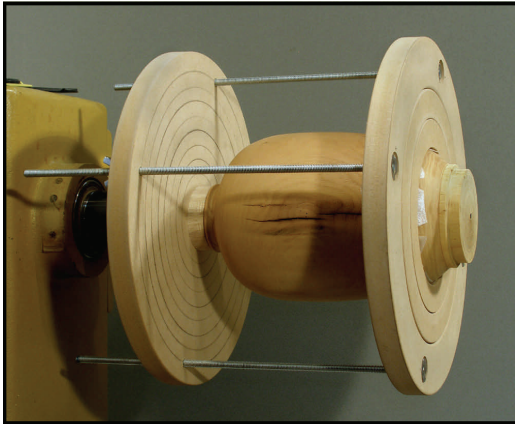
Saturday morning I got up early, quietly dressed, made my lunch, grabbed the dog, and slipped quietly into the garage. I hooked up the boat up to the truck, and proceeded to back out into a torrential downpour. The wind was blowing 50 mph, so I pulled back into the garage, turned on the radio, and discovered that the weather would be bad all day. I went back into the house, quietly undressed, and slipped back into bed. I cuddled up to my wife's back, now with a different anticipation, and whispered, "The weather out there is terrible." My loving wife of 10 years replied, "Can you believe my stupid husband is out fishing in that?" And that's how the fight started...

Here's a great website passed on to me by Matt Garner. So you think Dennis and Terry Reynolds turn big pieces, take a look.

[www.virgiltreeart.com](http://www.virgiltreeart.com)

## *Tips & Helpful Ideas*

I saw this on the World of Woodturners website last month posted by member "Doc Green" and thought it was great idea, especially after Malcolm Tibbetts mentioned he used the same process in the clamping of his segmented pieces. Doc was gracious enough to allow me the use of his article for our Newsletter, Thanks Doc.



This is my first attempt to build a donut chuck, just to see if I could, and to see how it would work.

Headstock disk is mounted on a 3" faceplate. There are several penciled circles drawn on it, which serve no real purpose. Right-hand disk is actually three interlocking annular rings. Two are removable if desired to hold a larger diameter workpiece.

The "bolts" are 4 pieces of quarter-inch threaded rod. They are epoxied into T-nuts on the right. The T-nuts fit loosely into drilled holes and slide out easily. Wing nuts secure the other end on the headstock side of the left disk. The sections of threaded rod are 12" long. Shorter quarter inch carriage bolts can be substituted in this same setup.

After the initial assembly and mounting on the lathe, I adjusted the wing nuts so that the right disk ran true (turned by hand). Then snugged the wing nuts a bit more. At this point, I brought up the tailstock to check centering. Very close, but not exact.

I then used a home-made pointer to check runout. Initially, maybe 1/16 inch. Found that by adjusting the wing nuts, I could correct the error. Was able to dial it in so that NO runout was visible. Less than 1/32".

Turned ON the lathe, slow at first, then ran it up to about 600 RPM. Did a test cut on the foot with a dull gouge and then checked the runout again. It had not changed.

Note that the rim of the HF at the center of the headstock disk is less than 2 inches in diameter. It is seated on a shallow cone that is removable. The cone is centered by a tenon that fits into a half-inch hole at the center of the headstock disk. I think this is a demanding test because of the small diameter of the bearing surface at the headstock disk.

From asking a lot of questions during the chat sessions . . . Thanks, Folks, . . . I gather that donut chucks are not used a great deal, jam chucking and vacuum chucking being preferred. But now I have one, and I'm proud of it!

Doc Green



# *Flashback's*

## *John Jordan*

*March 28th 2009*



## *Malcolm Tibbetts*

*April 4th 2009*



certain who is in the crowd. I can tell you a secret, shared by professional woodturners. there are many collectors, gallery owners, curators and just more buyers in the crowd than all the Regional symposiums combined.

At the 1998 AAW Symposium in Akron, Ohio, I saw a del Mano Gallery business card by the side of my piece in the Instant Gallery, with the note from Ray Leier, which read: "I am interested in your works, call me." I still remember that feeling today and my relationship with the gallery grew out of that moment. If I haven't come to the AAW symposium that year I might not be where I am today in my turning career. EXPOSURE is the word - if you've worked hard to create great work all year, the annual AAW Symposium is the place to gain the right exposure.

Still want more? Donate a piece to the EOG auction and send a picture in ahead of time. The top 65 pieces will go on to the live auction on Saturday night.

Before heading to symposium, please note The POP Fellowship Grant deadline is approaching. Do not pass up this opportunity which can possibly further your woodturning career. Details and application requirements can be found in the POP section of the AAW website [woodturner.org](http://woodturner.org). This grant will be awarded in 2010. Your next following opportunity to apply will be due June of 2011 and awarded in 2012.

What is the POP Fellowship Grant? The purpose of this Grant is to encourage creative growth, research, or to provide inspiration for

new directions in turned wood art. An applicant might be interested in pushing their work creatively in a new direction, working in collaboration with another artist, exploring new materials, a new way of using existing materials, etc. The only limit to what 'might' be explored is one's imagination. POP Fellowship Grants are offered every other year and are funded by proceeds from POP exhibits and auctions plus the annual auction at our national conference. Learn more at: [woodturner.org](http://woodturner.org). Any further information or guidance not found here can be obtained by contacting any POP committee member.

The POP (Professional Outreach Program) has come a long way since it was founded three years ago. A very heart-felt thanks to David Ellsworth and Jacques Vesery, they are holding the chair position back to back for the committee since day one. We've found a way to serve those who are interested in pursuing a career as a professional in woodturning and now you know what we're doing. Join us at the AAW Symposium in Albuquerque and let us help you see how far woodturning can take you!

Binh Pho

Happy Turning !  
and do it often.