

The Mid South Woodturners Guild



Turner's Talk

Bob Speier, Editor

July 2009

President's Pick



Jim Tusant

What's Inside

Page 1

- What's Coming Up!

Page 2

- President's Corner
- Mid South Perspective

Page 3

- General Meeting Minutes

Page 4

- Shop Talk

Page 5

- Wood Spin

Page 6

- Up Coming Events
- Minutes continued
- Wood Spin continued

Page 7

- Instant Gallery

Page 8

- Tim Yoder
- CBU Collection

Page 9

- Getting to know the Pro's

Page 10

- Lighter Side

Page 11

- Places to go

What's Coming Up! What Goes Around with Dick Absher



This month we are in for a treat as Dick Absher mans the demo lathe at the July 25th meeting. Many members have heard Sandi Speier's story of how she became interested in woodturning. She saw Dick demonstrating at the Pink Palace

Craft Fair. He was turning a baby rattle with captive rings. Sandi was captivated, declaring, "I can do that!" Those were Dick's exact words when he was introduced to turning while serving in the Navy, stationed in New Zealand, in 1986. He had just purchased a covered Kauri bowl from a local craft fair.

Dick is a self-taught turner with a long standing interest in art. In addition to his 30 years in the Navy, he taught middle school art for 15 years. He enjoys turning open bowls, but also has a special interest in turning architectural items, doing commission work for home remodelers and designers.



The July demo will be geared toward spindle turning, beginning with a decorated top, then a baby rattle with captive rings, and if time allows, a tool handle with a turned brass ferrel. Dick hopes

his demo will appeal to the newer turners, giving them tips that will help them accomplish some successful projects; but, as always, everyone can learn a trick or two from a pro.



President's Corner



his share as well.

I was honored to assist Malcolm Tibbetts with the check in of the EOG Auction items and some of the instant gallery items as well. I was over whelmed with the quality of pieces the turners turned in from all over the world, a real pleasure to meet everyone.

The Auction on Saturday night showed the effects of the current economy as the over all take was better then last year but not up to the standards expected. Many of the attendees received great deals for the quality of pieces they were bidding on.

I attended a membership meeting for chapter presidents which proved to be an eye opening experience for me. I learned many of the AAW members and chapter presidents utilize the AAW website constantly for information pertaining to running their chapter. There's so much more information on the site then I realized. My future mission will be to utilize the website more to keep the [members](#) of MSWG more informed.

During the symposium Sandi was involved in putting together a committee to formulate a survey to find out what's on the minds of the AAW members. To help the board better understand the needs of the AAW membership. Emmett Manley had been asked to participate in that endeavor. Thanks Emmett for stepping up to the plate once again.

The 2010 Symposium will be hosted in Hartford, CT. Not much further then Albuquerque. Now's the time to start building up your woodturning fund with plans to attend the symposium. I can't tell you what an experience it is to meet turners from all over the world, they have the same problems we do. You'll have unlimited opportunities with demonstrators from all over the world. Hope to see you all there.

Bob Speier, President

The 2009 AAW Symposium was a success as expected. We had nine MSWG members attending the 4 days of scheduled demonstrations, Instant Galleries and Trade Show. I'm glad I drive my truck to haul everyone's goodies home. Matt Garner did

MSWG Board of Directors for 2009

President
Bob Speier

Librarian
Bill McMillen

First V.P.
Dennis Paullus

Board Members
Rick Gillespie
Keith Burns

Secretary
Nancy
Boatwright

Webmaster
Trey Campbell

Treasurer
Matt Garner

Newsletter Editor
Bob Speier

2009 Mid-South Perspective "Building Blocks"

This is really the final notice: Turnings for the 2009 Mid South Perspective are due at the July 25th meeting! We have already received, displayed, and marveled at many wonderful interpretations turned from the squares of birdseye maple which Dennis brought back from last year's AAW symposium. This project embodies the spirit of the MSWG. It showcases the many talented and diverse turners who belong to our club. We expect to showcase the collection at the Jewish Community Center exhibition in October and to once again have an auction of the work to benefit the club's educational efforts in December. If you have turned a piece for this project and cannot make it to the July meeting, please ask a fellow member to bring your work to the meeting or contact Joan Kelly at 725-9165 to make arrangements.

Joan Kelly, Chairperson

MSWG MEETING MINUTES ***June 13th, 2009***

Call to Order and Welcome

The meeting was called to order at 9:00 a.m. by Bob Speier, President, who welcomed the Members and visitors. Bob also recognized and thanked the members of Tri-State Woodworkers for inviting MSWG to join them on their regular monthly meeting day.

Nametags were given to those who joined at the May meeting.

Approval of Minutes

Ray Tanner made a motion to approve the minutes of the May-09 meeting. Richard Hiller seconded the motion. The minutes were approved.

Financial Report

Matt Garner, Treasurer, gave the financial report.

General fund balance as of 6/13/09 = \$ 2,949.51

Education fund balance \$ 689.86

Video fund balance \$ 1,386.73

Glen Alexander made a motion to accept the financial report with a second from Tate Thomas and approved by a unanimous vote from members.

Bob Speier informed the members the Board has recommended the funds from the club monthly raffle be allocated to the Education Fund for a undefined time period for the purpose of rebuilding this account.

Tri-State Woodworkers News

Bob invited Ginger Magourik to speak on behalf of the Tri-State Woodworkers: Ms. Magourik thanked MSWG for providing the demo for the meeting. She announced Tri-State Woodworkers next regularly scheduled meeting will include a demonstration on working with balsa wood.

MSWG and Tri-State Woodworkers Joint News

Tri-State Woodworkers along with MSWG will be supporting the Bartlett Fair in September with

day-long demonstrations and asked members to volunteer. Both club's members are encouraged to support The Delta Fair with contest entries but neither MSWG nor Tri-State Woodworkers will be demonstrating at the Fair this year.

Memphis International Airport Exhibit

Ms. Magourik announced she is working closely with Mr. Cox at Memphis International Airport to dedicate a series of glass display cabinets for a woodturning exhibit. Joan Kelly suggested the 2009 Mid South Perspective project might be a good contribution for this venue.

Board Member Resignation

Bob Speier announced that Rick Stone has resigned as a MSWG board member for personal reasons. Keith Burns, at the request of the MSWG Board has agreed to fill the remainder of the term for this board position.

Shop Talk

As a result of Rick Stone's resignation a new Shop Talk Editor is needed. Ray Tanner, at Bob Speier's request will fill this position.

Mid South Perspective

Joan Kelly thanked the members for their participation in the 2009 Perspective and announced the deadline is extended to the July-09 meeting to encourage participation. Joan is continuing to pursue a public venue for the Perspective and will work with Ginger Magourik to explore the airport as a possibility.

Memphis Jewish Community Center

Bob Speier, continues to work with MJCC to organize the MSWG exhibit at their facility in October. There is room for 30 to 40 pieces. Items will be for sale with 40% going to MJCC, a standard commission. The price of pieces can be increased to compensate for the commission. There are 8 or 9 tables and about 6 pedestals. MSWG has been asked to demo during the opening reception on October 18th. This is good exposure for the club.

Shop Talk

In Bartlett TN

with Larry Sefton



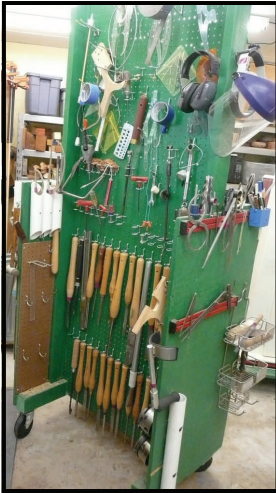
By Ray Tanner



Accomplished Artistic Woodturner, that's the real meaning of AAW for Larry Sefton. However, that's not the whole story as his shop also reflects a strong practical side, e.g. the large trapdoor in the ceiling with a small hoist attached to the rafters above for moving heavy items to/from the attic, or wheeled bases on most of his tools (table saw, jointer, band saw, belt/disc sander, etc.). This provides maximum flexibility in their use and storage.

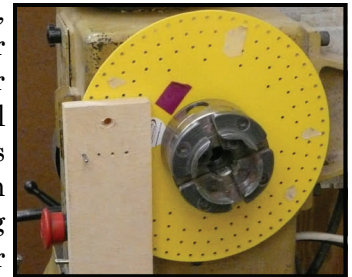


Fitted into a little less than a double garage he has insulated the overhead door, the ceiling and all walls and has fully air conditioned his shop for year-round use. It is well lighted with general ceiling mounted fluorescents and task lighting over his 1624 Powermatic Lathe (positioned in front of a window which may be opened to utilize a squirrel cage fan to blow turnings and dust outside). Weather not permitting, he uses a central vacuum system (collector enclosed on both sides with pegboard to increase tool storage space) and a dust collector made from another squirrel cage fan with filters on each side and an exhaust directed toward the ceiling. These arrangements make for a safer, cleaner workplace, less lung damage and less time spent cleaning.



Another labor saver Larry uses is a wall mounted support for his heavy tailstock, thus saving his back and the possibility of dropping the tailstock. His shop is highly organized with sandpaper sheets stored in a file drawer and sorted sanding discs on a special wheeled cart. What seem to be three bench grinders upon closer inspection turn out to be one for his turning tools, a second with a wire brush and general grinding wheel,

and a third with an MDF disk for honing and rubber mesh disk for polishing (rotating away from the user). Larry's attic located air compressor reduces noise and provides more shop space. Some special items he recommends include: 1) an indexing wheel which mounts directly on the lathe drive shaft, available for \$25 from www.IronFireLLC.com; 2) adhesive backed vacuum seal sheeting available from local hobby stores (less than \$1/sheet); 3) blow rougher grit off your fine sandpaper prior to applying it to your turning; and 4) keep an old bandsaw for narrow blade work and use your newer one for roughing out thick blanks..



Larry's turning interests include hollow form objects, intricate fret work, and more recently, mobile-like turned objects of various materials and textures. He is one of two MSWG members whose work was recently chosen for the AAW's 'Spirit of the Southwest' year-long traveling exhibition of only 30 international pieces!



Wood Spin

by Emmett Manley

What is the "best" Mid-South turning wood?



You might as well ask, what's the best restaurant in Memphis, or the best toppings for a pizza? We are dealing with opinions – in this short column I'll give you some of my mine.

First, recognize that we are fortunate to live in a temperate climate zone rich in hardwood timbers. Few places in the world have the diversity of native woods that we enjoy and take for granted.

Also, appreciate that I am a wood & tree nut (no pun) and I may be overly influenced by the inherent beauty of a wood species. One of the most interesting displays of woodturnings I have seen exists in a dulcimer shop in Hardy, Arkansas. Perhaps 60 or so simple woodturnings, all of the same general profile (an 8" twig pot), but made from every possible wood native to that area and so labeled. Fascinating, at least to me, as I could compare common species to princess wood, tree of heaven, crepe myrtle, catalpa, sassafras, butternut, etc.

The big question, of course, is what wood qualities does one emphasize in determining the best turning woods? Different characteristics will be important to different woodturners, and to the same person under various circumstances. People turning large bowls will obviously have different wood requirements than folks who fabricate small thin items.

Here is a provocative statement: Walnut is not my favorite wood. Walnut is a beautiful wood and may be considered the King of Mid-South Woods; however, there are a few problems. For me, walnut dust is a big time respiratory tract and skin irritant. Another problem is much of the walnut I have used seems to want to fracture – big chunks will come flying off the lathe at inopportune

times. Cracks are common and not always obvious. Walnut is a temperamental beauty, but often worth courting.

I could make similar remarks about cedar; irritation and splintering are major negatives. Cherry is another beautiful wood, and a delight to turn, but a wood that was born to crack.

Speaking of cracking, dogwood can be the most gorgeous wood of all area timbers; but this wood, despite all preventative efforts, nearly always cracks and thus breaks the heart of the woodturner. Sweet gum is a beautiful wood, fun to turn, rarely cracks but loves to warp. If you like oval bowls (they can be neat) sweet gum is your wood.

For light colored woods, holly is hard to beat, as is magnolia, of the purple streaks. But both like to warp. I can see people selecting hickory/pecan or maple as their favorites – strong woods and often with surprising character. Oak and elm are other sturdy light colored woods which don't receive the respect they deserve.

If we were voting only on the friendliest wood – easy to turn, with minimal warping and cracking – my winner would be Bradford pear. Not a beautiful wood, but as a stable base for embellishments, ornaments, etc., this wood is perfect (Binh Pho concurs). Our very own Valentine brothers prefer plain ole sycamore as the platform for their magnificent wooden hats.

Let me pose a key question that might help in sorting out favorite woods. If limited to one (native) wood for all of your future turning interests, what would it be? I believe my choice would be persimmon – this member of the ebony family demonstrates great color/spalt variation piece to piece, is fun to turn, strong, rarely warps, exhibits minimal cracking, and has a beautiful finish

Continued on pg.6

Wood Spin

Continued

Give me a second wood and I think it would be black locust—spectacular grain patterns, strong, stable, polishes like glass. Does not lose color like a similar wood, osage orange, which also wants to crack. And, if you can get your hands on any of these native woods, they have a lot going for them: honey locust, black gum, red bud, box elder, and mimosa.

So, we are blessed with this delightful dilemma of too many pretty woods. Perhaps we should have a MSWG election? Members could vote for their three favorite native turning woods and stimulate a lot of discussion in the process.

UPCOMING EVENTS 2009

- **July 25th (Saturday)-** Dick Absher
Demonstration TBA
- **August 22nd & 23rd (Sat. & Sun)**
Tim Yoder
- **September 26th Bartlett Festival**
- **October 18th—November 8th**
Memphis Jewish Community
Center Art Show
- **October 24th Oktoberfest**
Joel Benson's in Rossville, TN
- **November 28th Skip Wilbur (?)**
Demonstration TBA

MSWG MEETING MINUTES *continued*

Turner's Talk

Bob Speier thanked Emmett Manley for his recent article.

Raffle

The monthly raffle was held at the conclusion of the regular meeting.

Adjourned

The meeting was adjourned at 12:00.

Respectively Submitted

Cassandra T Speier, Member



Memphis Jewish Community Center

6560 Poplar Avenue
Memphis, TN 38138
P 901.761.0810
F 901.767.4888

MSWG has a great opportunity in October to present and sell our wares. The dates are Oct. 15 thru Nov. 9th. For those that are interested in participating please start getting together your pieces for the show. If there are any Questions please don't hesitate to contact one of the committee members for details.

Not only will we be participating in the art show, we will also be providing a demonstration on Sunday Evening Oct. 18th in the lobby of the community center. We are also working on a plan to provide hands-on classes for youth and adults at the center. This will take place in 2010, so keep that in mind as well.

This is a fabulous opportunity for MSWG to gain exposure in the community.

June Instant Gallery



Bill Covington



Bill Shaw



Dan Baeily



John Ginski



Larry Sefton



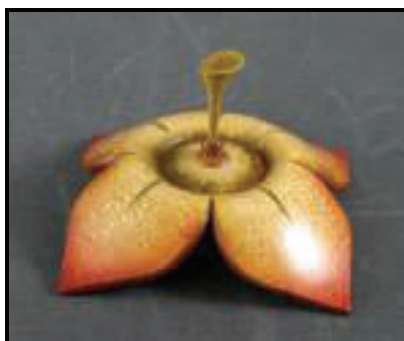
Bob Speier



Rick Gillespie



Mike Maffitt



Joan Kelly



Bob Speier



Don Wilcut



Matt Garner



Vallentine Bros



Sandi Speier

Tim Yoder

“Woodturning Workshop” on PBS
here August 22nd & 23rd



Learn to turn a block of wood into beautiful pieces with host Tim Yoder in *Woodturning Workshop*. Using a lathe to “turn” the wood as he carves, Tim creates decorative pieces like a green bowl, wooden goblet and paper-weight, as well as functional household items like a wooden scoop, rolling pin and chair spindles.

How bad can he be, he turns on a Stubby (eat your heart out Dennis)

Click on this link to learn about

[Tim Yoder's Public Broadcasting Network woodturning program](#)



Christian Brothers University

CBU Permanent Collection

We are fast approaching the deadline to have up to three pieces given to CBU for the Mid South Woodturners Guild Permanent Collection. Please bring your work to the July meeting. The work will be judged shortly after the meeting and the selections made. This collection of Art is indeed an honor for our club and for our members. Remember that this collection is "forever" and what a legacy to leave.

Keith E. Burns, Chairman

Getting to know the "Pro's"



Al Stirt



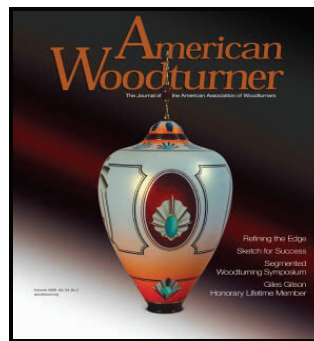
Al Stirt has been a professional woodturner for more the 35 years. His work is included in numerous public and private collections, including the Smithsonian, the White House and the American Craft Museum. He has demonstrated and taught woodturning & design in England, Ireland, New Zealand and Canada as well as throughout the United States

In addition to his functional bowls and platters, for the last 25 years he has been making ceremonial objects to try to address emotional & spiritual needs.

In his's own words,

I consider myself a "bowl maker" more than a wood turner because, although the turning process fascinates me, it is the resulting bowl that commands my interest. From the earliest times bowls have had meanings for people beyond the purely utilitarian. The bowl as vessel has a resonance deep within the human psyche. I have always thought of each piece that I make as a composition utilizing elements of pattern, line, weight, texture and form. Even in the most simple pieces I try to find a harmony of grain and shape. I seek a balance in my work between the dynamic and the serene. By playing with the tension created by combining the circle's perfection with the energy of pattern I am trying to make pieces that have life. I use patterns, whether created by grain structure or organic fluting & carving or repeated geometric shapes, to develop harmony in each of my pieces. I find myself always looking for a new means of expression within the turned form.

*AAW Summer 2009
Journal
Join or Renew now!*



Happy Turning and do it often!

On a Lighter Side

See what you can do when you get really good at woodworking



Places to go near by



The Georgia Association of Woodturners (GAW), dedicated to providing education, information and organization to those interested in woodturning, will be presenting its annual symposium, "Turning Southern Style XV". This year's event will again be held at the Unicoi State Park and Lodge near Helen, Georgia on September 18-20, 2009.

GAW sponsors this annual event which features some of the world's leading woodturners and turning artisans.

This year's featured turners include:

Bill Grumbine, Art Liestman, and Al Stirt.

Also featured are:

Nick Cook, Joe Gettys, Wes Jones, and Dave Barriger.

Instant Gallery:

The instant gallery will return as a favorite and we invite each participant to display up to four pieces of his/her work for all to enjoy.

Vendor Area:

As always, the vendor area will be well stocked with tools, wood, and all other woodturning related supplies and equipment.

Saturday Night Dinner and Auction:

Prior to our auction, there will be a banquet dinner on Saturday evening. As always, all proceeds from the auction support continuing education in woodturning through our scholarship program. We encourage all who participate in the symposium to donate a piece to our Saturday Night Auction to benefit the scholarship fund.

For Further Information:

For additional information and pricing, please visit www.gawoodturner.org.

You are encouraged to register prior to August 1, 2009. Refunds for cancellations will be given up to September 1, 2009. Registration may be limited, so act quickly.

To register:

Visit www.gawoodturner.org. Print and complete the registration form and mail it, along with your check, to: Georgia Association of Woodturners, c/o Harvey Meyer, 5174 Waterford Drive, Dunwoody GA 30338

If you would like a brochure, visit www.gawoodturner.org or contact :

Harvey Meyer,

Symposium Chairman

The Georgia Association of Woodturners symposium@gawoodturner.org

Just a reminder - the early registration discount ends on July 31, 2009. Register now and save \$20. Beginning August 1, 2009, it will cost you \$20 more than it will today - so don't delay. Also, registration is limited so don't risk being locked out of this spectacular event. Don't miss this great opportunity - register now. If you have already registered, thank you. You should have received email confirmation if you provided an email address with your registration form. If you have not received a confirmation, and you are sure you registered, please send email to symposium@gawoodturner.org.