

Mike Maffitt: Editor

MSWG
BOARD OF DIRECTORS

President
SKIP WILBUR
1st V.P.
JOEL BENSON
2nd V.P.
JOSEPH VODA
Secretary
TERRY MAFFITT
Treasurer
MATT GARNER

Members at Large
MIKE MAFFITT
RAY TANNER
JIM TUSANT
RICK STONE

Webmaster
MIKE MAFFITT
Newsletter Editor
MIKE MAFFITT
Librarian
BILL BLEAU

Cover photo:
John Williams and Glenn Alexander.

Inside Panel:
Bill Handel Candlestick Holder.

FEATURES IN THIS ISSUE

Page 03 - SHOP TALK: KEVIN PEARSON

Page 05 - A LITTLE HUMOR

Page 06 - WOOD SPIN by Emmett Manley

Page 08 - PRACTICE MAKES PERFECT

Page 09 - THE PRESIDENT'S CORNER

Page 10 & 11 - A SAFETY MINUTE

Page 12 - NEW AAW SCHOLARSHIP PROGRAM

Page 13 - DAVID SAPP DEMO

Page 14 - GENERAL MINUTES

Page 16 - SCHOLARSHIP WEEK AT JOHN C. CAMPBELL

Page 19 - JIM ADKINS AT WEST TN WOODTURNERS

Page 21 - INSTANT GALLERY

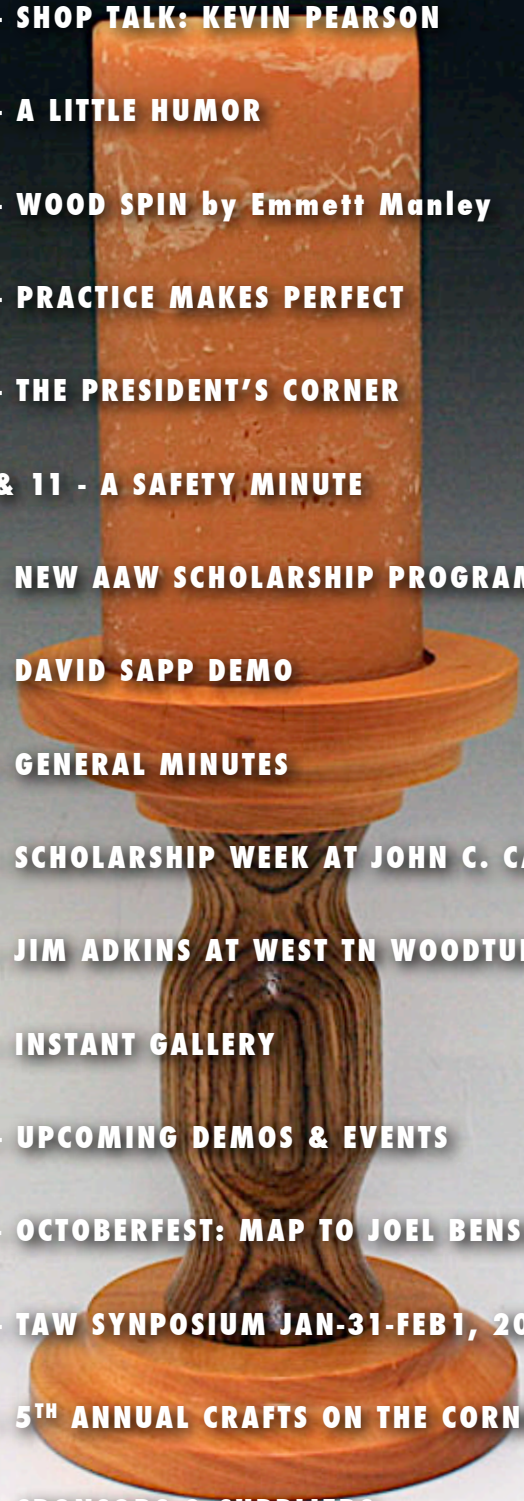
Page 26 - UPCOMING DEMOS & EVENTS

Page 27 - OCTOBERFEST: MAP TO JOEL BENSON'S

Page 28 - TAW SYNPOSIUM JAN-31-FEB1, 2014

Page 31 - 5TH ANNUAL CRAFTS ON THE CORNER

Page 33 - SPONSORS & SUPPLIERS

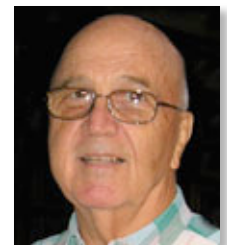




A relatively new member (almost a year) Kevin Pearson¹ brings expertise and interest to our wood turners club. Born and raised in Memphis, Kevin is married, has a grown daughter and currently works in the local lubricating oil industry. His past jobs have included road construction, millwork sales for Lowes and automobile painting. Joe Hagan, a neighbor, introduced him to the MSWG.

(cont. on next page.)

**Ray
Tanner**





3



4

Kevin's shop fills most of his two-car garage². By utilizing roller bases (built with his Hobart MIG welder) all of his machine tools may be rolled around as needed. These include a ShopFox commercial grade table saw³, an 8" x 20" Powermatic Planer⁴, a Craftsman tilting table band saw, and an old 12" swing Craftsman lathe. He's looking for a used 16" to 20" Powermatic, or equivalent, lathe. The planer requires 220 v, 3 phase power for which he has a Phoenix Phase Converter⁵ mounted on one wall. He has an oversized air compressor and tank⁶ for powering his pneumatic hand tools. Kevin has several battery operated tools obtained on sale and discount during his time with Lowes. Soon to be installed is a central sawdust collector acquired from a former MSWG member's shop. He also enjoys collecting old tools, such as the log skidding tongs⁷ pictured here.



8



5



6



9



10

(cont. on next page.)



He is gradually acquiring all the parts to build a 1928 Model A Ford pickup truck. A second goal is to complete a Dobro resonator guitar using the clamp frames⁸ inherited from an uncle. So far Kevin has cut and glued some of the bookmatched cherry for the body and has the laminated neck⁹ almost complete. His locally found black walnut and cherry slabs and boards currently occupy part of his garage¹⁰, but he has plans for additional storage racks to free up more shop floor space. Some of the walnut was cut 65 yrs ago and was stored beneath a friend's house who acquired it from a sawmill.



Kevin's turnings include cherry handles¹¹ for his homemade EasyWood tools, a large cherry cookie jar¹ and a hollow form cherry vase¹² - made as two shallow bowls - and is completely finished inside. His finish is painted and/or sprayed clear polyethylene, with fine sanding between coats.

POSSIBLE WOOD SOURCE IN MEMPHIS

To All,

The August 29th Commercial Appeal had an interesting article about a local shop which has facilities to dry wood and may be willing to sell turning blanks. It is Woodland Tree Service located at 1831 Titus near Getwell Rd and I240. It might be worth a visit to see if they can and will supply dried turning blanks.

Ray Tanner

A LITTLE HUMOR

His wife's graveside service was just barely finished, when there was a massive clap of thunder, followed by a tremendous bolt of lightning, accompanied by even more thunder rumbling in the distance. The little, old man looked at the pastor and calmly said, "Well, she's there."

WOOD SPIN



Woodturning: A Breathtaking Experience

During a recent program, I was asked if I was concerned about inhaling fungi from spalted wood. I replied that I was not, which was, at best, a too quick answer to an important question.

There is so much concern among woodturners about wood flying off the lathe and striking someone that we tend to overlook a major health hazard associated with woodturning -- lung damage. A case can be made that long term inhalation of wood dust,

fungi, molds, grinder stone, and dried glues results in more incapacitation, shorter life spans, and deaths than acute shop injuries.

(cont. on next page.)

**Emmett
Manley**



There can be serious acute respiratory problems in the wood shop, and we'll consider some of these shortly. However, the long term exposure to inhaled shop particles is more important and is analogous to the damage caused by smoking where exposure is often quantitated as pack years. One pack year being equivalent to smoking one pack of cigarettes every day for a year, or two packs for six months, etc. Forty pack years of cigarette exposure almost guarantees serious lung damage and many people get into respiratory difficulty with far less. Someone may create a "lathe year" or "shop year" index at some point in the future for woodturners.

The pulmonary experts tell us that the dust particles we can see floating around in the shop air are not the source of the damage to our delicate lung tissues. Rather, the damage is done by particles so small they cannot be seen but which penetrate deep into the lungs where they remain, and where they interfere with the critical absorption of oxygen so vital to proper lung function. Short term, few problems are encountered, but over a period of years the damage becomes evident. And, there is no treatment for obstructive lung disease -- your ability to function diminishes and the stage is set for even more serious lung disease.

Complicating this dismal outlook is the fact that most of the masks, helmets, and other devices developed to clear the woodturners' air are of limited effectiveness, as reported by several pulmonary experts. However, you may delay lung problems by using quality face masks, expensive helmets, and a good shop dust collection system. Or, don't start woodturning too early in life, don't turn much dusty wood, and have good genes that provide some protection from the complications of wood dust obstructive disease.

Personally, I turn and sand dry, dusty, spalted wood in a strong air stream created by a fan directed across my lathe. This low tech approach along with limited shop time and starting this madness late in life, may keep my exposure years down below the danger level.

In addition to the physical obstruction and damage caused by very fine wood particles, we are also subject to respiratory tract irritation produced by chemicals present in certain woods. Some woods demonstrate a high incidence of irritation potential and these include walnut, cedar, and many exotic woods, with cocobolo being a prime example. Almost everyone responds to one or more woods and the level of skin response varies -- from minor redding to areas that appear to have been burned. Lung tissue is very delicate relative to skin, so the lung irritation can be severe. Learn the woods that give you trouble and then avoid them. In general, woods that feel slick or oily are likely to be trouble woods -- this makes sense because the irritating chemicals are usually contained in wood oils.

Fine stone particles coming off a grinding wheel is another source of airborne material that can accumulate in your lungs and produce irreversible damage to your alveoli (the tiny fragile sacks where gas exchange takes place). Yet another source of toxic materials you may inhale is the dried adhesives in glued up woods. I have learned that some of the glues and resins used in commercial products are extremely irritating. DymondWood makes beautiful bottle stoppers but in order to turn that material I must have a close fan blowing on high speed.

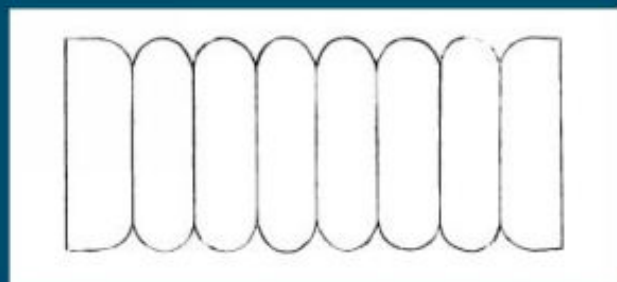
Back to the question which precipitated this column -- what about fungi, molds, yeasts, and bacteria growing in your lungs after being inhaled during woodturning? Here is one area where I have good news, as such does not appear to take place. Human lung tissue is sufficiently different from rotting wood as not to serve as a growth substrate for such life forms.

(cont. on next page.)

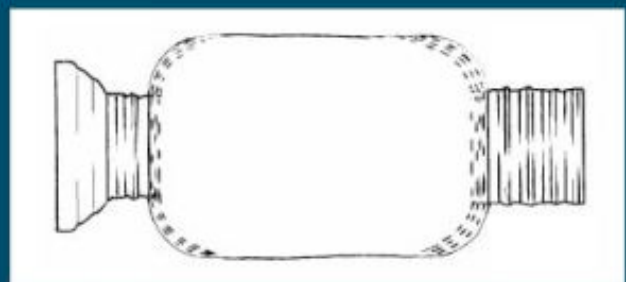
However, there are reports of woodturners reacting adversely to inhaled molds and fungi spores, including even a few deaths, but it appears that these problems were the result of acute allergic reactions to the material and not from growth of inhaled biological products. Acute allergic reactions take place when your body tries to reject foreign substances. These complex reactions involve the release of many powerful chemicals within your body, with histamine being the best known but not necessarily the most dangerous. Sneezing, runny nose and eyes, and wheezing are common symptoms of such a “hay fever” attack, but in susceptible individuals the response may result in severe asthma and even cardiovascular collapse and death. Some sensitized woodturners keep anti-histaminic drugs, cortisone-like drugs, and/or injectable epinephrine available to treat acute emergencies.

Include lung protection in your woodturning safety plan.

PRACTICE MAKES PERFECT



CONVENTIONAL METHOD – Allows you to make 8 or 10 beads after which the practice piece is consumed.



A BETTER WAY – Hundreds of practice strokes on a piece before it is consumed.

The President's Corner



Last month we were privileged to have David Sapp from the Nashville club demo for us threaded lidded boxes using the Baxter threading jig. David left us with a lot of valuable information on how to make these beautiful and functional boxes, thank you David.

Items for the MJCC Holiday Art Bazaar are due 7 Nov. We have about 5 people so far who have expressed interest in selling their crafted items. This is a great opportunity to sell some of your items at a 80/20 split. Let me know if you are interested.

We had a lot of wood donated to the raffle last month. I'd like to see some of that wood returned in the form of a small cereal sized bowl by March meeting so we can contribute as a club to the Empty Bowl Project. Last year we turned in 33 bowls, let's see if we can do better this year.

You're getting a lot for just a little, the \$25 annual fee you pay for a membership doesn't cover the entire cost of refreshments/room rental, we need another source. The monthly raffle is one source and our annual Christmas auction is but another. I need you to start thinking about and crafting an item for you to place in the auction. It doesn't matter what size, shape or color. We need objects and people with deep pockets to bid on these items. Now, I know what you are thinking, -"why bid on that item when I can make one just like it or better"? That's not the point, the money gets to go into the club treasury, that's the point, this is how we get to bring in out-of-town demonstrators.

Octoberfest – yes it's this month at Joel Benson's rural estate. On the menu will be some home-made chili made from old family secret recipe's and some home-made pies. Jeff Brockett from TAW will demo making woodturning tools. Jeff will be bringing some tool making materials with him and will make a few tools for people at cost. In addition we will have a couple of demonstrations on ornaments, pay attention and take some notes, for during the November meeting we will have an ornament contest. So if you have a turning tool you are having trouble with or a question on sharpening, bring them in and we'll go over them at the sharpening station. I will also be pulling a couple of names out of the hat to be submitted to AAW for a scholarship consideration, you do not have to be present to be selected. If that's not enough I will also pull out a

**Skip
Wilbur**



raffle winner for the registration fee (\$145) to be waved for TAW (end of Jan – cannot transfer or sell if you win), so break loose of a few five dollar bills and get a few raffle tickets.

I need your help (don't they call this the volunteer state?). We have three members leaving the BOD at the end of this year (our bylaws state two consecutive 2 year terms for BOD members). I need three individuals willing to serve on the BOD, this will be a two year commitment. We meet once a month usually on the Tuesday prior to our Saturday meeting around 6 PM for about an hour and a half and discuss/decide on club agenda topics. If you can't serve on the BOD there are ways to contribute as well; set-up, clean-up, write an article for our newsletter, demo, offer a tip or a technique. This is not my club or the Board Of Director's club, it's everyone's club and the way we function is to have everyone contribute. I have always said, "it's my job to motivate and it's your job to be motivated". Don't think just by helping in some small way doesn't help the club to function.

"One kernel is felt in a hoghead; one drop of water helps to swell the ocean; a spark of fire helps to give light to the world. None are too small, too feeble, too poor to be of service. Think of this and act."

Hannah More (1745-1833); writer.

A SAFETY MINUTE

To the members of Mid-South Woodturners Guild,

Thank you for your donation to help defray the cost of building a lathe safety shield.

The Georgia Association of Woodturners has just concluded our Turning Southern Style Symposium for 2013. Thanks in part to your donation and the encouragement from your club, we decided to build lathe shields for all four of the lathes used at the symposium. Here is a link showing Cindy Drozda turning behind one of our new shields.

<http://www.aawforum.org/photopost/showphoto.php?photo=12588>

The first day of our symposium the shields got their first real world test. One of the demonstrators blew up a piece of mesquite. One piece hit the shield and bounced down to the floor and the other half hit the shield and ended up behind the lathe. The important point is that we didn't have a missile going out into the crowd and no one was injured.



I am now in the process of writing an article on the design of our lathe shields, which should be published in American Woodturner next year. My hope is this will encourage more clubs to build their own lathe safety shields.

We thought you should know that we put your donation to good use.

Thank you.

Wes Jones, Treasurer
Georgia Assn. of Woodturners

A SAFETY MINUTE

From: Ron Betterton To: David Sapp

I have turned several bowls since taking your classes. I think I am addicted.

I did a 6 inch bloodwood round treasure box for my wife. Absolutely beautiful, if I do say so myself. I was turning a lid from another 2x6 piece of bloodwood at about 1000 rpm. The parting tool caught about halfway through and the block came out of the lathe, straight back into my face.....mask. No injury. It didn't even hurt the wood.

Thanks for insisting we wear masks.

TIPS AND TECHNIQUES: BEADING TIP



Larry Sefton took a class on basket imagery from Skip Wilbur and was inspired to make his own beading tip. Here is his note.

Just for fun I tried to make my own 1/8" tip.

Took all of 30 minutes to make and it works great (got it right my first try)!

I should now be able to make any size or special shape I need.

Larry Sefton



American Association of Woodturners

Announcing a New AAW Scholarship Program

New Scholarships to Arrowmont and John C. Campbell Schools Available to AAW Members

The AAW Board of Directors is extremely excited to announce a new scholarship initiative. In recognition of the invaluable contributions made by our local chapters to our educational mission, twenty-seven scholarships to two of the nation's leading woodturning centers will be provided in 2014 to members of the American Association of Woodturners. We strongly encourage all chapters to help us promote this important new opportunity for our AAW members.

Under the program, the AAW Endowment Trust Fund (ETF) and the Arrowmont School of Arts and Crafts will make available funds for 14 \$550 scholarships at Arrowmont School of Arts and Crafts. In addition, the ETF, working with John C. Campbell Folk School will award 13 \$594 scholarships. All together, 27 scholarships will be awarded. In total, \$15,422 in scholarships will be given to AAW members.

In order to apply for the scholarships, nominees must be an AAW members and be nominated by their AAW Chapter. Star Chapters will be allotted two nominations for the first 50 members and an additional nominee for each additional 50 members. Regular chapters will be allotted one nomination for the first 50 AAW members in the chapter. After that, each additional 50 AAW members will allow another nomination. If there are more than 27 nominations, a drawing will determine the winners.

The program is to provide tuition only. Any room and board and travel to the school locations will remain the responsibility of the nominee. John C. Campbell Folk School is located in Brasstown, NC; Arrowmont is in Gatlinburg, TN. *All classes will take place in 2014.*

Chapters must provide the names of nominees, the number of chapter members and the number of AAW members in the chapter to Saint Paul, MN headquarters by November 15, 2013. Within two weeks from that date, the winners will be notified.

We deeply appreciate all you do to support the AAW. Please don't hesitate to contact the AAW office if you would like more information about this new initiative.

Lou Williams
AAW Membership and Chapters Chair

September Demo: David Sapp presents Threaded Lidded Boxes



David Sapp was the September demonstrator and gave a fantastic demo on threaded lidded boxes. David, who is the owner of the Nashville, TN Woodcraft store and is a former president of the Tennessee Association of Woodturners, was gracious enough to travel to Memphis and share his talents and loads of information.

David, thanks for your time and energy for a wonderful demo.



Call to Order - 9 a.m. by Skip Wilbur. Minutes were approved and seconded by club members. Skip extended a welcome to everyone.

Treasurer's Report: Matt Garner, Treasurer – Last month's raffle proceeds \$101, 48 grants awarded, 88 members. Expenses included \$75 for bottle stopper awards.

Account Balance - \$4,710

Guest and New Members: Mike Ames joined the club and L.A. Crude (former member) visited the meeting. L.A. lives 45 miles from San Antonio, Texas in Kerrville. He had Mesquite in the back of his pickup for sale at \$2.25 a pound.

Schools, Classes or Symposiums – Last month Larry Sefton joined Skip Wilbur in his shop as part of the mentoring raffle. Larry said it was the best \$5 he spent. During his mentoring session with Skip, Larry learned how to make an Indian Basket using the methods taught to Skip by none other than Jim Adkins.

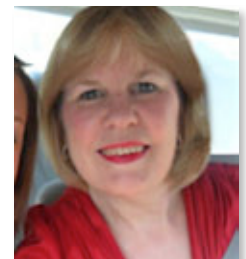
Tip, Technique, Source – **Larry Sefton** – Take photos to Shutterfly to get a \$20 book. **Bill Handel** - Check out the *American Woodturner* August issue to learn how to make a Skyhook. The Skyhook is 4 ½ inches in length and great for school show & tell. **Joseph Voda** – Create a rubber tool with a cash register tape holder. **Skip Wilbur** – Lowes or Home Depot sells a 5,000K

LED light with a magnetic base for \$32. The light generates no heat and was used during the club demo.

TAW Symposium. The Tennessee Association of Woodturners is holding their 26th Anniversary Symposium on Friday, January 31 and Saturday, February 2 at the Franklin Marriott Cool Springs in Franklin TN. The symposium features Trent Bosch, Barbara Dill, Doug Fisher and Kurt Hertzog. Last year 23 people from our club went to Franklin. Get your registration in early. Jeff Brockett gave the club a ticket valued at \$175 covering the 2-day registration. The ticket is not transferable. Buy a raffle ticket for a chance to win the free registration. The drawing will be held at the Octoberfest. <http://tnwoodturners.org/symposium/>

Board Members Terms Ending in 2013 – Three members of our BOD will have served 2 consecutive terms by the end of this year. According to our Bylaws, their terms will end. A

Terry Maffitt



club member asked if we could change the Bylaws. Skip asked members to contact him if they are interested in serving on the BOD.

Memphis Jewish Community Center – The MJCC will be hosting their Holiday Gift and Art Show on November 9 – 14 in the Shainberg Gallery. Club members are invited to sell their turnings at the MJCC during the show. The commission is 80/20. The MJCC advertises the event on their website as an opportunity to pickup holiday gifts while supporting local artist. No Christmas theme gifts please. Two items mentioned as holiday gift ideas at the BOD meeting were a Tzedakah Box or a Dreidel Top. Both look like fun projects. Check them out on the web.

Octoberfest – The club will hold the annual all day event at Joel Benson's shop. Demonstrators include: Jeff Brockett, who won a scholarship to attend a class with Frank Penta to learn off axis turning and tool making. Jim Tusant will be teaching tool sharpening and Joel Benson will be wielding a chainsaw for another great demo. Skip passed around a signup list for Chile, pies, cake and salads.

Semi-annual Tool Sale and Swap and Ornament Contest – October

West Tennessee Woodturners Outdoor Festival - Bob Hobbs, President of the club, mentioned the outdoor festival that was being held on October 5 at Chuck Jones' farm. Joel Benson will be the guest demonstrator. Joel lives in Rossville, Tennessee and is a board member and vice president of the Mid-South Woodturners Guild. His demo will include both turning and chainsaw work. In addition to being an outstanding turner, Joel is a professional arborist.

Empty Bowls Project – The club has bowl blanks provided by Northern Woods <http://www.nwfiguredwoods.com/figured-wood-bowl-turning-blanks.php> If you have an interest in participating in the project, give Matt \$5 and he will give you a bowl blank. Return the finished bowl to the club and Matt will give you a \$10 gift certificate!

Demonstrator – David Sapp – Threaded Lidded Box – David is the owner of the Nashville Woodcraft Store. He has been hooked on woodworking since he was 8. He is a 4th generation woodworker who enjoys making cabinets, woodturning and woodcarving. David is a Master Windsor Chair Maker and President of the Tennessee Association of Woodturners. David used a faceplate and a chuck plate during his demonstration along with a Baxter Thread Master. David has taken classes with Richard Raffin. Tools used during the demonstration included: gouges, scrapers, skew chisel, and parting tool. David also uses beeswax applied to the threads with an old toothbrush and a medium grade CA glue and accelerator when using a faceplate. David had a few items for sale from his store brought at the club's request. Some of us went home with new chucks or woodturning tools. You know, you never can have too many chucks! Check out the link to his store here: <http://www.woodcraft.com/stores/store.aspx?id=552>



Scholarship Week at John C. Campbell

Written by Jeff Brockett



The Mid South Woodturners Guild chose me as a recipient of one of their 2013 scholarships. For my scholarship class I chose the Frank Penta Class at the John C. Campbell Folk School in Brasstown, NC. John C. Campbell Folk School was founded in 1925 and was created as a unique institution that sees to bring out the best in people. The Folk School goal is to provide an atmosphere of developing skills in a non-competitive, supportive environment that allows individual expression to be encouraged through various media. For more information about the John C. Campbell Folk School visit their website – www.folkschool.org.

The week long Frank Penta class that I chose to attend was turning, detailing and finishing platters. This class is designed for students with platter turning experience. The week was designed to take the students through the process of turning three footed and multi-axis platter bases and then learning various detailing, texturing and coloring processes to enhance the platters. I encourage you to visit Frank's website – www.woodspriteturnings.com. Frank shares his platter techniques and tool making processes in detail.



Students arrive at the Folk School for week long classes on Sunday. We checked in at 3:00 pm and got our housing assignments. There are many housing options available and I was assigned a room in Hubble House. After finding my housing assignment I walked down to the Willard Baxter Woodturning Studio and found Frank Penta. The woodturning studio is fully equipped. Each student is assigned a Powermatic 3520 lathe, tool cabinet and turning equipment. Frank had contacted all the students in advance and encouraged us to bring our own turning tools. I brought several large platter blanks with me to turn.



Orientation is at 5:00 on Sunday and all attendees were given an overview of how the week would go. After orientation it was off to dinner. Meals are served family style in the dining hall. As soon as dinner was over we meet our instructors and headed to the various studios. Frank had a full class of 10 students for the week, most of which had some experience. Andy Gunning was Frank's assistant for the week. Frank had each of us introduce ourselves and talk about what we wanted

to get out of the week. Frank then gave an overview of what he wanted to accomplish as an instructor.

On Monday morning Frank took us through the process he uses to turn a platter. All of Frank's platter blanks are a minimum of 2 inches thick and roughed out on a bandsaw.



He mounts all his platters using a screw chuck mounted in a chuck. The first platter assignment was to turn a basic rounded footed platter. We soon found out that Frank does not turn a tenon on any of his platters. A recess is created on the base of the platter that the chuck is used in the expansion mode. For a Stronghold or Talon chuck with #2 jaws a recess of at least 2 ¼" is created. The platter blank is trued up; the first couple inches of the front of the platter are then turned. We completed the rim treatment on the front of the platter before we moved to the base. Frank showed us how to use a homemade pyramid tool to create beads and then various texturing tools to enhance the rim. We then moved to the back of the platter and finished turning the base leaving a foot. Again various tools were used to embellish the base. Andy Gunning demonstrated how to create a button in the middle of the base and then how to embellish the button. The bases of the platters were

completely finished before being reversed. After reversing the platter and mounting it on the chuck in expansion mode we finished the front of the platter and tried various texturing techniques to enhance the platter. Finished up the first platter and it was time to head to supper. Frank opened the shop every night after supper and encouraged us to come back and spend time. Our evenings were time to turn anything we wanted or to get help from either Frank or Andy. Tuesday's assignment was to turn a three footed base on a platter and I decided to prepare my platter blank in advance.



Tuesday morning Frank demonstrated the process of turning a three footed base on a platter. Turning a three footed platter is similar to turning a round footed base. The base is turned and then three feet are carved in the foot. Size and design of the feet can vary to suite your taste. You can find complete preparation details for turning a three footed base on Frank's website. I selected a 14" diameter piece of mineral stained poplar to turn and completed the project before lunch. After lunch I was able to turn another three footed platter. Both platters had

different texturing embellishments. Tuesday evening after supper Frank demonstrated

how to make a driver jig to turn off-axis wine bottle stoppers. I will demonstrate how to make this driver during the Mid South Woodturners Guild Picnic in October.



Wednesday morning Frank demonstrated how he turns a multi-axis base on a platter. The preparation and instructions as to how to turn a multi-axis platter base can be found on Frank Penta's website. The key to a successful multi-axis base is careful preparation, measuring, marking and drilling of the three holes needed to create the multi-axis. Once the multi-axis is turned texturing and embellishment are added. You can take the process one step further and create a three footed multi-axis base. I was able to successfully create two multi-axis base platters on Wednesday.



Thursday morning Frank demonstrated how he makes his various tools. He uses HSS steel and cold rolled steel to create various tools. Doug Thompson now offers a 7" tool handle with various collets that is perfect for these smaller tools. I will demonstrate how to make the pyramid tool, the skew, the hollowing tool and the spindle tool during the Mid South Woodturners Guild Picnic in October. If you are interested in more information about the tools Frank makes visit his website. Thursday afternoon I worked on an ambrosia maple platter. Frank shared the formula he uses to make finish: 1 part pure Tung oil, 1 part gloss polyurethane (he uses gloss with the thought that he can

always knock the shine off) and 1 part mineral spirits. I also experimented with using Auto Air Colors to enhance a maple platter base.

Friday morning came way to quick and it was time to recap and clean the woodturning studio up. It was a great week and I learned a lot of new processes that will enhance my woodturning ability. In addition I picked up several tips that I will be able to pass along to others. I really appreciate the opportunity the Mid South Woodturners Guild gave me when they awarded this scholarship and would like to thank the membership for this great opportunity.

If you plan on attending a class at John C. Campbell Folk School I recommend that you register early as the woodturning classes fill up quickly. The current catalog lists classes through June of 2014. There is no television, or radio on campus, cell phone service is limited and only a few areas with wifi reception – you are on campus to get immersed in the class that you have chosen.

Resources:

Richard Raffan - Bowl Turning Design (book)

Keith Rawley – instructional work book

HSS steel and cold rolled steel – Enco

Auto Air Colors – www.autoaircolors.com

Fabric reactive dyes – Dharma Trading

3M 600-800 grit abrasive pad – buy direct from 3M or Auto supply stores

Krylon Triple Thick glaze – Walmart

John C. Campbell Folk School – www.folkschool.org

Frank Penta – www.woodspriteturnings.com

Frank Penta's Platters



JIM ADKINS

AT WEST TN WOODTURNERS

West TN Woodturners had their monthly meeting on Saturday, September 14th in Jackson, TN. Jackson is less than an hour drive from Memphis out I-40 east. The club has approximately 45 members and they love to have guests show up for their meetings. The featured demo for the meeting was performed by Jim Adkins, Dexter, MO (and a member of Mid South Woodturner's Guild). He left Dexter early Saturday morning and drove to Jackson in time to set up for his demo. Jim demoed his Indian basket illusion. He has done several demos for our club in the past and they were enjoyed immensely by the Jackson club members. To say that Jim is a patient person is a great understatement. It appeared that the club watched intently and asked pertinent questions. Jim makes the process look easy but in fact it takes many, many hours to complete one basket.

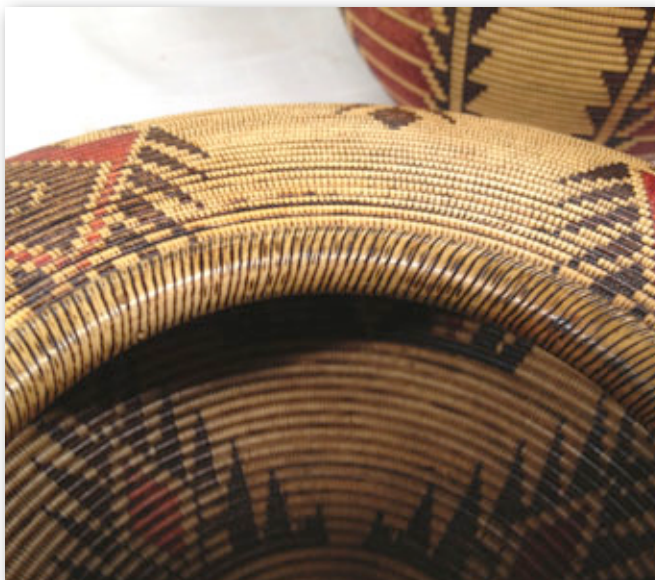


(cont. on next page.)

Several members of our club drove to Jackson to see the demo. Tate Thomas, Skip Wilbur, Mike Maffitt and Jim Tusant.

The West TN Woodturners invite you to attend their monthly meetings held the 2nd Saturday of each month. Like our club the dues are only \$25 a year - a bargain to gain another perspective of wood turning. Their web site is www.wtnwoodturners.com. Please take a moment to visit it.

Jim Tusant



INSTANT GALLERY



BILL FULLER
"Bug Out" glass cap made of Red Gum.



BILL HANDEL
Osage and Zebra Wood Candle Pillar.



BILL HANDEL
Maple and Burmese Blackwood candlestick holder.

<http://www.midsouthwoodturners.com/>



BILL HANDEL
Maple and Wenge inside out candlestick holder.



BOB HOBBS
Mice and cheese of various woods.



JOHN WILLIAMS AND GLENN ALEXANDER
Various wood clock ornaments.



JOHN WILLIAMS AND GLENN ALEXANDER
Various wood clock ornaments. Congratulations on the article.



JERRY BURCH
Cherry bowl.



JIM TUSANT
Sweet Gum with leather inlays
fluted hollow form.



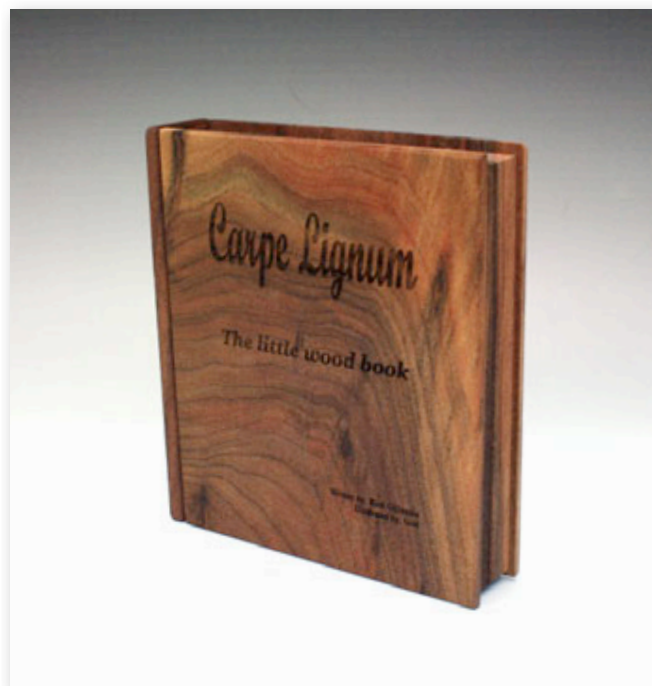
JOHN JOHNSON
A practice piece of Baltic Birch plywood using various stains and dyes.



JONAS NEMANIS
Pecan hollow forms.



MARK MAXWELL
Oregon Myrtlewood closed bowl form.



RICK GILLESPIE
Wooden book.



RICK STONE
Pin Oak bowl unfinished.



TERRY REYNOLDS
Wide rimmed bowl.



SKIP WILBUR
Maple faux basket.



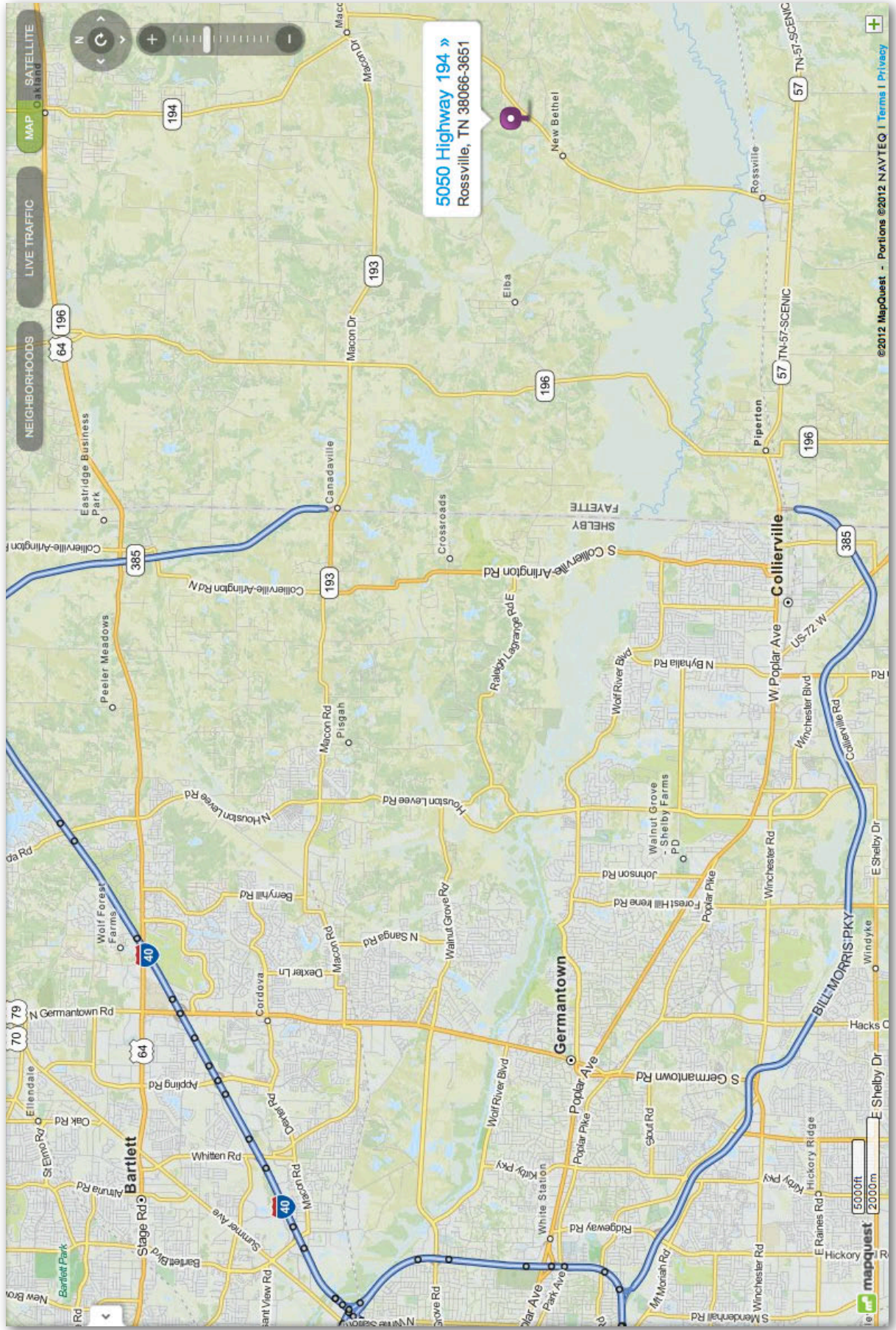
SKIP WILBUR
Maple hollow form.

Upcoming Demos & Events

- October 19th, 2013 MSWG
 - Crafts on the Corner in Bolivar, TN.
- October 26th, 2013 MSWG
 - Octoberfest at Joel Benson's home. (See map on next page)
 - Jeff Brockett will demo at our Octoberfest – making your own tools.
 - Jim Tusant will be hosting a Tool Sharpening Station.
 - Joel Benson will be doing a Chainsaw Demo.
 - Ornament demonstrations.
 - Quarterly Tool Sale – Bring any tools you might want to unload and sell
 - Food will be provided for lunch and breakfast.
- November 23rd, 2013 MSWG
 - Bill Handel.
 - Christmas Ornament Contest.
- February, 2014 MSWG
 - Mike Hunter of Hunter Tools
- January 31-February 1, 2014
 - 26th Annual TAW Symposium in Franklin, TN. (See page 28 for details).



OCTOBERFEST AT JOEL BENSON'S HOME IN ROSSVILLE, TN



TAW 2014 Annual Woodturning Symposium



Tennessee Association of Woodturners 26th ANNUAL SYMPOSIUM

Friday, January 31 & Saturday, February 1, 2014

The Tennessee Association of Woodturners (TAW) will be presenting their 26th Annual Symposium on Friday, January 31st and Saturday, February 1st, 2014. The Symposium will be held at the Franklin Marriott Cool Springs, 700 Cool Springs Boulevard in Franklin, TN. The 2014 Symposium features some of the worlds' leading woodturners including: Trent Bosch, Barbara Dill, Doug Fisher and Kurt Hertzog.

2014 Symposium Detail

Symposium Schedule - a demonstration schedule for the two days of the Symposium will be added here in the near future.

Demonstration Descriptions - a detailed description of each of the demonstrations will be added here in the near future.

Instant Gallery - We invite every Symposium participant to display up to four pieces of their work for all others to enjoy during the Symposium.

Peoples Choice Award - Each year every participant can enter up to one piece, which is entirely their own work, into the Peoples Choice Award. Vendors and demonstrators are not eligible for the People's Choice Award. No collaborative efforts please. All participants at the Symposium will be asked to vote and select the best piece for an award.

Banquet and Auction

Banquet - Prior to our auction on Saturday evening there will be a banquet at the Marriott Hotel, which is included in the price of the registration. Door prizes will be given away.

Auction - All proceeds from the auction will support continuing education and training in woodturning through our demonstrator and scholarship programs. Highlights of the auction include wood turnings, wood and tools donated by our demonstrators and vendors. We encourage all Symposium participants to donate a piece to the auction to benefit the education funds and our community outreach programs.

(cont. on next page.)



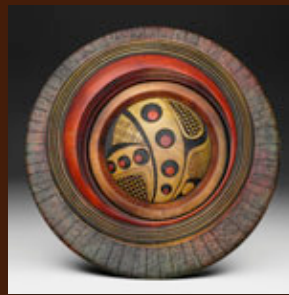
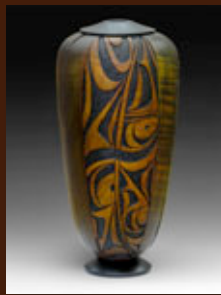
TRENT BOSCH



BARBARA DILL



DOUG FISHER



KURT HERTZOG



TAW 2014 Annual Woodturning Symposium



Registration Fees and Forms:

Walk-In Registration: 2-day is \$200 and 1-day is \$120

Cancellation Policy: After December 31, 2013 a \$50 processing fee will be deducted if registration is cancelled. After January 14, 2014 the registration fee is not refundable.

SYMPOSIUM FEES	REGISTRATION FEE	AFTER DECEMBER 31
FULL TWO DAY SYMPOSIUM	\$145.00 *	\$175.00 *
ONE DAY ONLY	\$90.00 *	\$110.00 *
SPOUSE	\$75.00 *	\$75.00 *
YOUTH (UNDER 18)	\$35.00 *	\$35.00 *
BANQUET AUCTION ONLY	\$35.00	\$35.00

* Includes Banquet/Auction, whether attending or not.

Methods of payment:

CREDIT CARD - register for the Symposium and pay by through our secure PayPal site by clicking [here](#).

CHECK -complete the online check Registration Form by clicking [here](#) and mail the completed form to:

Jerry Weygandt
 Attn: TAW 2014 Symposium
 8221 White Chapel Ct
 Brentwood, TN 37027



Direct payments must be made by check or cash as TAW cannot process credit or debit cards



CRAFTS ON THE CORNER

5th Annual

Handmade – Homemade
Arts & Crafts

Saturday, Oct. 19, 2013

9:00 A.M. til the music ends!

ON THE SQUARE - BOLIVAR, TN!

Right in the middle of all the festivities!

Join us for a day of music, food & fun spotlighting area Artists & Crafters during
Hardeman County Music Festival & Barbecue Contest! Other events include Antique Cars,
Motorcycles & Tractors; Pet Parade; Fine Art Show; Farmers' Market & more!

*For information please call Jackie Smith at 731-697-8559.

Application online at fb Event: Crafts on the Corner-2013

Deadline for all vendor applications is October 1, 2013

Imagine the Bowl or Hollow Form you could get from this log.



Image shared by: Skip Wilbur

The Woodwork Shop, Inc
8500 Wolf Lake Drive
Suite 101
Bartlett, TN 38133

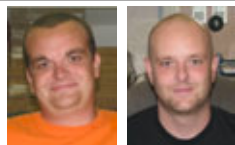


Jim Cole Tommy Crawford Evans Woodward Floyd Carter

Phone: (901) 755-7355
Fax: (901) 755-2907
Email: thewoodworkshop@bellsouth.net

www.thewoodworkshopinc.com 10% Monthly Discount with Card

got wood?



Brad Leigher Mike Leigher

Phone:
(864) 723-2765
Email:
service@turningblanks.net

CRAFT SUPPLIES USA
THE WOODTURNERS CATALOG



Phone:
1-(800)-551-8876



<http://www.woodturnerscatalog.com/>

Provide Gift Certificates to MSWG



CHOICE WOODS

<http://www.choice-woods.com/>
888-895-7779

Provide Gift Certificates to MSWG



Packard
WOODWORKS
INC.

The Woodturner's Source
1-800-683-8876

<http://www.packardwoodworks.com/>
Provide Gift Certificates to MSWG

BIG MONK LUMBER COMPANY
859-653-3520
Pete Kekel
<http://www.bigmonklumber.com/>

EASY WOOD TOOLS
Donna at 270-903-4270
<http://www.easywoodtools.com/>