



Turner's Talk



Chuck Ludwigsen, Editor

** June Demo: Chuck Ludwigsen / Peppermills **

HEADLINE NEWS

• Location

The June meeting is at our normal location at Game day.

• AAW Symposium

The 2006 AAW Symposium in Louisville is fast approaching. Save on admission and hotels by signing up early. If you do, you could stand a chance for great prizes—like one of 5 Oneway 2436 lathes.

• TAW Symposium

The 19th annual TAW symposium will be held in Nashville on August 12th and 13th.

Wood Chips

www.woodchipshome.com

MSWG Lathe and chucks are made by

ONEWAY
MANUFACTURING

Brad's Bowls

By Joan Kelly

MSWG member and professional turner Brad McCollum was the demonstrator for the club's May 20th meeting. Brad enjoys turning hollow forms and art pieces, but his bread and butter comes from his beautiful salad bowls. He makes and sells 200-300 of them annually! He roughs his bowls from green wood, then finish turns them after a drying period of about 3 months. This finish turning process is what he demonstrated in great detail, and with many helpful tips.

Brad began by emphasizing safety; protecting your face and your lungs. Safety glasses are not enough. In his shop Brad uses a 3M Airstream helmet with a face shield.

The basic curve of the bowl is established in the rough turning. Brad pointed out that the rough bowl had the pith centered across the top. This provides an aesthetically pleasing product and also makes finish turning easier. Because the natural warp is balanced. He mounted the bowl in his chuck, being sure that the now elliptical tenon was centered between the jaws for maximum hold. Using a 3/8" side-ground bowl gouge,

he trued up the top rim. Tip: True the rim while there's plenty of "beef" to support it.

Then he made a truing up pass inside the bowl. Tip: Remove the chuck with the bowl in it. Insert a drive spur with the center point removed into the opening on the back of the chuck. Insert a 1/4" point-ground drillbit through the hole in the spur and drill a tiny pilot hole into the tenon. It will be perfectly centered with the rim and inside of the bowl.

Next he jamchucked the bowl and trued up the tenon. He cut a square shoulder where the tenon meets the bottom, and then a slightly wider shoulder. This allows for more options in designing the foot later on. Generally, a wider base is necessary for a functional bowl, and a narrower base looks better on a decorative bowl.

With his bowl gouge, he trued and refined the outside curve, cutting from the base to the edge for smoothness and control. Tip: Mount a solid color backdrop immediately behind your lathe so you can really see the line of the curve.

He made the final cut using a shear scraper, turning the gouge to an almost closed position, holding the tool at about 45 degrees, taking a very light cut. He

(Continued on page 2)

President's Corner:

By Sandi Speier

April Meeting

The April meeting was a bit of a deviation from the norm. Instead of holding the meeting at Game Day, we hit the road and met out at 'Black Dog Enterprises' a.k.a. Joel Benson's home shop. The meeting was not concluded until almost 3:00 in the afternoon. We had two lathes going at all times with multiple demonstrators at any given time. And, we enjoyed a great BBQ lunch prepared by 'Chef Robert'. We had great attendance, with 40+ members spending the day; 6 guests who were so impressed that one, Cliff Valentine, joined the club on the spot. The Super Nova chuck donated by Charles Martin of Woodchips (www.woodchipshome.com) was auctioned off. The bidding was enthusiastic and Cliff Valentine, our newest member, won with the final bid of \$200.00. All-in-all it was a great day!

Many thanks to Joel Benson for his hospitality and hard work in preparing for our meeting!

(Continued on page 6)

The Mid South Woodturners Guild is a proud chapter of the
AMERICAN ASSOCIATION OF WOODTURNERS



MEETING MINUTES APRIL 2006

President Cassandra Speier called the General Meeting at Joel Bensons shop to order at 9:05 am. Cassandra welcomed the members and introduced the six guests by name. President Speier recognized members who had brought items for the instant gallery. Cassandra also recognized Don Wilcut for a great job in doing the "Shop Shots" article in the newsletter. She also reminded the members about the AAW challenge for Christmas Ornaments. Larry Sefton was the first to offer up he's turnings.

Committee Reports

Minutes: Cassandra asked for an approval of the previous meetings minutes as posted in the newsletter. The Members approved the minutes.

Finance: Ryan McMullen provided a detail report of the finances, which were approved, and post at the sign-in desk.

Meeting

Cassandra turned the meeting over to Mike Kelly who gave the members the lowdown on how the day would pan out. He introduced the instructors Dennis Poullas, Joel Benson, Mike Kelly and Bill Shaw.

At approximately 12:00 pm Bob Speier served up lunch for the attending members.

The day's demos started back up at approximately 12:45 and concluded with Joel doing more chainsaw demos at approximately 2:45. Joel was thanked for his contribution and the meeting was adjourned.

Submitted by: Robert Speier, Secretary

MEETING MINUTES MAY 2006

1st V.P. Mike Kelly called the meeting to order at approximately 9:00 am. Mike explained President Speier was out on business.

Mike apologized for the minutes not being reported in the newsletter however indicated copies were on the sign-in table for review. The minutes were later accepted and approved as written.

Treasurer Ryan McMullen provided an in depth accounting of the clubs finances. The financials were then posted on the bulletin board for member review.

Mike reported on the chair caddie and requested help with the cleanup after meetings. Mike explained in the future the raffle would be held downstairs on the west side of the building after the meeting cleanup. He also explained he now had a key to the rear door of the building and only the rear west door would be open for the members.

Bob Speier reported the shirts and caps would be available at the June meeting in time for the AAW Symposium in Louisville.

Though Chuck Ludwigsen was not in attendance, his input was provided by his notes. Chuck explained "the website is now updated with exception of Garage Sales items and the May newsletter. Those will be posted soon." He explained the May newsletter had not been sent out and apologized to the Guild. Mike Kelly also pointed out the newsletter had been entered in the annual AAW competition in Louisville.

Joan Kelly gave the members an overview of the Christian Brothers exhibit in 2007. She explained what an honor it was for the Guild to be asked to participate in this venue. She explained a panel of judges would be enlisted to evaluate the entries and encouraged the members to bring forth as much as they could to help show the com-

(Continued on page 3)

(Continued from page 1): Brad McCollum

then added a decorative bead near the rim using a tool made from a flat blade screwdriver. Tip: Mount a screwdriver in a vise and cut a semi circle into the end using a chainsaw sharpening bit in a Dremel tool. To use the bead cutter, tilt the tool down from the toolrest and gently rock the blade against the bowl.

Brad removed the bowl from the jam chuck and used calipers to check the thickness in the center of the bottom. He mounted the tenon into the chuck and retrued the rim (even dry wood will move) and did the final shaping of it. Then he began thinning the walls, paying attention to maintaining an unbroken curve from rim to center. Tip: To prevent making a funnel, leave a small nub in the center. Compare the depth of this nub with your caliper measurement to know how much wood remains. When you are satisfied with the interior, cut off the nub.

To get a smooth finishing cut, he sprayed the inside surface with water mixed with a squirt of soap. Then he used a heavy scraper, cutting from center to rim. Tip: Make sure the toolrest is raised so the scraper is slanted downward to cut with the burr. Hold the scraper with your right hand while supporting the bowl from behind with your left hand to reduce vibration. Keep the pressure on the scraper very light.

Finally, Brad shared his views on "abrasive technology." He likes to sand with the lathe in reverse using a 2" foam sanding disc. He began with 80 grit to remove tool marks. After a few passes, he stopped the lathe and worked on the remaining tool marks which were concentrated on the end grain. After that, he didn't even stop the lathe as he worked through grits 120, 180, 220, and 320. He finished with 4000 steel wool, stressing holding it with the lathe pulling it away from you for safety.

The last step was to finish the bowl's bot-

tom. Brad did not demonstrate sanding the bowl's exterior due to time constraints and dust, but he would normally follow the same steps utilized on the interior. Again the jam chuck was employed, this time padding the bowl's interior with a mouse pad. Brad incorporated the shoulder he left beyond the tenon as the base of the bowl. Using his 3/8" bowl gouge, he trimmed away most of the tenon. He made final cuts with a side ground spindle gouge due to the tight space around the live center. A straight edge was laid across the base to check that the surface was slightly concave and would rest without rocking on a table. The only remaining work would be to remove the small nub left in the center and apply finish.

We thank Brad for sharing his tips as a production turner. His teaching was organized and easy to understand. Even experienced bowl turners should have gained lots of useful information. *jk*

Shop Shots

.....Jerry Wagner



outside Memphis that it seemed a better fit.”

“My main goals in turning would be turn things that others would appreciate and use. My bowls, for example, have thicker sides and bases... if they are just beautiful but not useful, I steer clear of the genre. I have turned some of the ‘beautiful’ and ‘artsy’ type, but I prefer useable things. Those ‘beautiful things are way too fragile to be in general use and I do not have a Gallery at my disposal.”

Jerry retired from the Pontiac division of General Motors where he worked 36 plus years.

He has been turning off and on since 1953. He had some lapses due to moving around with GM and having no shop for several years. His first lathe was an Atlas Brand 12X35 that he bought in 1953. He had to sell his original shop and began to reassemble it in 1970. He then bought a used 1929 Delta and now owns a 1970's Delta 12X36 with variable speed.



His favorite woods to turn would be Pear and Cherry in domestics, anything in the Rose-wood family in the exotics.

“When you turn, you simply take a non-descript piece of wood and it then becomes something entirely new. My motto is, “Turning the Not yet into the Now”. Over the years it has allowed me to make many objects from wine Stoppers to Lamp/Fan Pulls to bowls and platters. It also has been instrumental in restoring old antiques and other furniture such as a broken chair or table leg.”

“Along with 3 others, we formed the original turner’s club in 1987 or so. It was called Memphis Wood Turners Guild. We renamed it ‘MidSouth Woodturners Guild’ in about 1995. There were so many new members from Mississippi, Arkansas and towns

English turners, among them a Mr. Peter Childs. Mr. Childs was sort of the ‘Father of Modern Turning’ at the time. Dana became a ‘disciple’ of Childs. He was also shown the value of the English turning chisels as well as holding devices. He imported all of that material and started to teach woodturning as well as woodcarving. He also started the Memphis Arts and Craft Assn., known as MACA, here along with a Mrs. Mimi Dann. I took a course with Dana in 1973 and became an ADDICT TO TURNING. I guess that I still am.”

By Don Wilcut



(Continued from page 2)

munity who the MSWG was.

Under “Old Business” Mike Kelly explained to the members the Board had spent a great deal of time looking into the requirement of belonging to AAW. He explained the Board did not take the matter lightly and asked for input from the members. He also explained a vote would be taken on the matter at the end of the discussion. A good exchange of ideas was had. At the end Mike read the three options of the ballot:

- Keep the bylaws as stated: “members are in good standing of both MSWG and AAW”.
- Change the bylaws: “members are encouraged to join AAW upon joining the MSWG and are required to be AAW members upon renewal of membership in MSWG.”
- Change the bylaws: “members are encouraged, but not required, to be in good standing in AAW.”

He also explained the vote would be a written ballot. The ballots were handed out to the members in attendance. The Ballots were collected during the coffee break and counted by Bob Speier and Keith Burns. Six members voted for number 1, six members voted for number 2 and eighteen members voted to change the bylaws (#3) to not require AAW membership.

After the revisions are made and reviewed by the members, a vote will be taken at the June meeting for ratification of the bylaws.

Mike informed the club members in attendance that Ray Tanner, a former member had rejoined the club and all welcomed his renewed membership.

Mike told the members of his conversations with Joe Ruminski and the plans for his August demo.

Mike Introduced Brad McCullum as the demonstrator for the day. Brad showed the members his process in turning a cherry bowl from green wood. An in depth description of Brads demo can be seen in the newsletter.

The meeting was concluded at approximately 11:45. After cleanup the raffle and auction of the lathe stands was held at the rear west door of the facility.

Submitted by: Robert Speier, Secretary

UPCOMING EVENTS

- June 17th: **Monthly Meeting (3rd Sat) 9:00-12:00 Chuck Ludwigen, Peppermills**
- July 22nd: **Monthly Meeting**
- August 26th-27th: **Guest Turner**
- September 23rd: **Monthly Meeting**
- October 28th: **Turning Fest**
- November 18th: **Monthly Meeting (3rd Sat)**
- December 9th: **Christmas Party**

April ~ Instant Gallery



May ~ Instant Gallery



(Continued from page 1) *President's Corner*

May Meeting

The May meeting was held back at Game Day and we were entertained by Brad McCollum turning the President's Challenge, a utility bowl. While I missed the meeting, I understand it was a great demonstration! Thank you, Brad!

AAW Membership

The key topic of discussion during the business meeting was the issue of MSWG's requirement that all club members also be AAW members. Over the last several months we engaged in debate over MSWG's requirement that all members be also members of AAW. The board members conducted quite a bit of research on this matter; we've spoken to many club members; we've spoken to many other clubs, and the March-06 President's Corner was dedicated to enumerating the benefits of AAW membership. Club members were given the opportunity to vote on the issue and in a majority decided to take this requirement out of the current MSWG Bylaws. New Bylaws will be distributed at the June meeting. In my opinion this process of questions, debate, research and collective decision making is a testament to a healthy organization! Thank you to everyone for your input and partici-

tion.

In Appreciation

On behalf of the MWSG board members and myself, thank you to everyone who has pitched in and helped with the 'labor' of the monthly meetings. So many of you show up early and stay late to help with chairs, supplies, refreshments, equipment, etc. It is very much appreciated! Special thanks go out to:

- Don Wilcut for spearheading the 'Shop Shots' section of our newsletter. This takes a fair amount of personal time and energy and Don does a great job!
- Larry Sefton and Brad Patterson for handling the refreshments at each meeting.
- Keith Burns, Howard Malone and Don Wilcut for their work in the Instant Gallery. The photos for our newsletter are great and showcase our members turnings beautifully!
- Troy Weeks and Jeremy Ludwigsen in heading up the raffle. This is such a great part of the meeting and takes an extraordinary amount of work, patience and organizational effort!

Thank you to everyone who has participated in the Instant Gallery! MSWG's mission is to promote education and fellowship, and the Instant Gallery plays a

significant role in achieving both. The number of turnings displayed each month continues to grow, so its clear we all enjoy the opportunity to exclaim over each others work and try figure out "how did he do that?"

AAW Christmas Ornaments Reminder

Every year the AAW sponsors a "return to the community" project. As you know, this year in Louisville, the AAW project is Christmas ornaments. Ornaments donated to AAW will be delivered to Kosair Children's Hospital in Louisville. Each year the hospital collects the donated ornaments, decorates trees with the ornaments and then either auctions them or sells them outright to raise money. Last year Kosair raised nearly \$400,000 to help the kids in need. So, even if you are not attending AAW this year, please get to turning your best tree trimmers! Wouldn't it be great if we could donate one ornament for every club member! At the last meeting, Larry Sefton started the ball rolling by bringing two beautiful examples turned out of holly, one of which was dyed a glowing and Christmassy red! Thanks, Larry!

President's Challenge

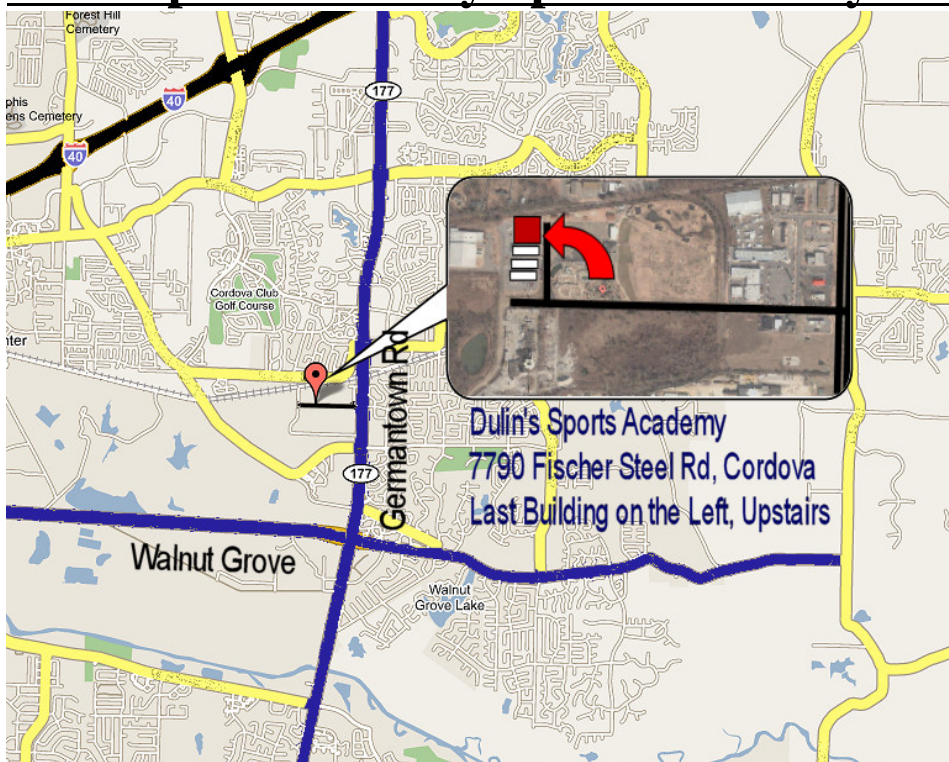
Keeping with the spirit of the AAW Return to the Community Project, lets have the June President's Challenge be Christmas ornaments. So, please everyone out on your "creative hat" and turn a really cool, and perhaps even different or odd, Christmas ornament. Then, of course, plan to donate to the AAW cause. .

Sandi Speier
President

"Delay not to seize the hour! "

Aeschylus

Map to Gameday Sports Academy



CLASSIFIED ADS:

Please forward your items for sale, trade, or giveaway to Chuck Ludwigsen (chuck@ludwigsen.org) or call (901) 485-4851. Items will be published in the newsletter for one month only unless you let us know that it is still available. Deadline for entry is the 5th of each month.

~~~~~  
Antique Lathes for SALE. \$50  
each or best offer. See Photos.  
Wiley Patterson 685-6346 (h)  
338-6311 (e)  
~~~~~



AAW ~ "Return to the Community"

During our AAW Symposium each year, we have a "return to the community" project. This year in Louisville, we will collect Christmas ornaments.

They will be delivered to Kosair Children's Hospital in Louisville. Each year the hospital collects ornaments and decorated trees and auctions them or sells them outright to raise money. Last year they raised almost \$400,000 to help the kids in need.

All AAW local chapters are urged to turn as many Christmas ornaments as they can and either bring them to the symposium or mail them to

*Greg Streif
7308 Abbott Glen Dr.
Crestwood, Ky, 40014
(gregstreif@insightbb.com)*

The Mid South Woodturners Guild is a not-for-profit organization formed to promote and encourage the art of woodturning and, in doing so, promote and encourage the art and craft of woodturning in general. Membership is open to anyone and includes a subscription to the monthly newsletter.

Meetings are held on the 4th Saturday of each month at 9:00 am at 5790 Ferguson Rd, in Bartlett. Annual dues are \$25.00. Address inquiries about the Mid South Woodturners Guild to *Sandi Speier, 8736 Johannesburg Dr, Germantown, TN 38139*. Please send newsletter and web site items to *Chuck Ludwigsen* (chuck@ludwigsen.org).

Meeting Format:

Club Business:	9:00-9:30am
Demonstration:	9:30-11:30am
Raffle:	11:30-12:00pm
Cleanup:	12:00pm



Sandy Speier—President

2006 Board

President:	Sandi Speier
1st VP:	Mike Kelly
2nd VP:	Chuck Ludwigsen
Secretary:	Bob Speier
Treasurer:	Ryan McMullen
Member:	Keith Burns
Member:	Joan Kelly



Just Arrived

Delta Lathe 14", Model 46-715

Oneway Turning Accessories

Good Book Selection

All Porter Cable machinery

10% above cost

Be sure to call for Bi-weekly Specials

2631 Jackson Ave.

Memphis, TN 38108

Phone: (902) 452-9663 Fax: (901) 452-0277

E-mail: colco@colcofinewoods.com

Monday—Friday 8:00AM—5:00PM

Saturday 9:00AM—12:00 noon



8500 Wolf Lake Drive Suite #1

Bartlett, TN 38133

Phone: 901/755-7355

Fax: 901/755-2907

E-mail- ddean@thewoodworkshopinc.com

Mid South Woodturners Guild
C/O Sandi Speier
8736 Johannesburg Dr
Germantown, TN 38139

