



## TABLE OF CONTENTS

Page 2 – APRIL DEMONSTRATION: JIMMY CLEWES

Page 3 – SHOP TALK

Page 5 – WOOD SPIN: SENSATIONAL WOODTURNING

Page 7 – THE PRESIDENT'S CORNER

Page 8 – THE COBBED WEB: SEGMENTED WOODTURNING

Page 10 – MARCH GENERAL MEETING MINUTES

Page 12 – USING WHAT YOU GOT:

Page 13 – 2010 UPCOMING DEMONSTRATIONS

Page 15 – MARCH DEMO RECAP: MIKE ZINSER

Page 16 – MARCH INSTANT GALLERY

Page 17 – APRIL 2010 AAW BOARD LETTER: BINH PHO

Page 19 – PROJECT KOSOVA: MSWG TURNED TOYS

Page 20 – HELPFUL TIPS: SPALT YOUR OWN LUMBER

Page 21 – AAW MESSAGE: KURT HERTZOG

Page 23 – THE 2010 AAW SYMPOSIUM IN HARTFORD, CT

Page 24 – GAW SYMPOSIUM: TURNING SOUTHERN STYLE XVI

Page 25 – FOR SALE BY OWNER



Bob Speier: Editor



# JIMMY CLEWES

## April 24th & 25th

Presents a Two Day Demo

by: Joan Kelly



While Jimmy is here, he will offer four demonstrations:

- \*Design, shape, form and aesthetics
- \*Six-sided, twisted box
- \*Long stemmed goblet
- \*African drum style box with sterling silver inlay



The Mid South Woodturners Guild is proud to welcome professional woodturner and teacher Jimmy Clewes for a two day instructional demo April 24-25. Jimmy is originally from the UK where he learned to turn and earned an honors degree in 3-D Design. He currently maintains a home and studio classroom in Las Vegas.

The Saturday morning session (our regular meeting time) is available free to MSWG members. There is a charge of \$20 for the remainder of the weekend. Jimmy's classes at Arrowmont and other venues are in great demand and usually fill up as soon as they are posted. This is a great opportunity to learn from one of the best for a nominal charge.

Jimmy has demonstrated and taught turning all over the world. He is known for his expertise in using dyes to enhance wood, his skill at turning many styles of boxes, his high level of energy, and his great sense of humor.

When asked what drives him, he shares, "My energy comes from those around me. When I can stir the creativity of one's mind, that for me is very satisfying. As with any artform, expression is only limited as one's mind and I want to 'raise the bar' and create an awareness of the artform that has been virtually unknown to most people."





# SHOP TALK

with Mike Maffitt  
by: Ray Tanner

Mike Maffitt has packed a lot of useful machine tools into a single garage sized shop (11' x 22') which provides adequate room for turning and other woodworking projects. He is currently constructing additional wall storage cabinetry for tools and other small items and utilizes magnet bars behind his lathes for ready access to his gouges and chisels. (The only bar he's found strong enough to support heavy tools is the 24" Magnetic Bar from Craft Supplies.)



Mike received inspiration and encouragement from his father

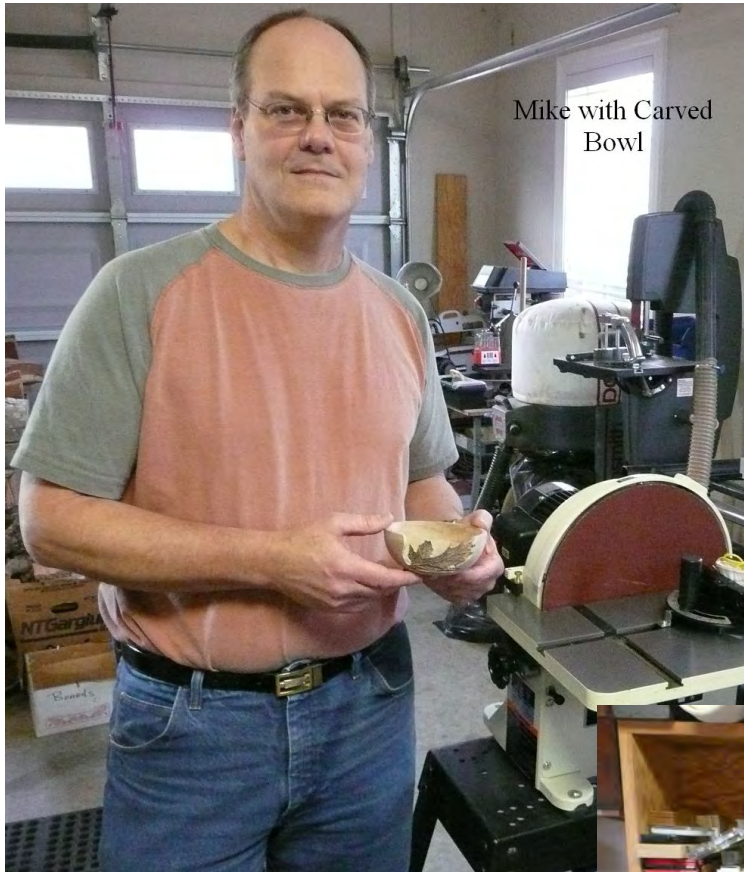
who turned pens and other small items and passed several tools and supplies to him, but Mike has only been

turning for a little over 3 years. He recently acquired a dental type air drill and is doing some delicate and beautiful hand carving on his turned items.



Mike has an excess Delta Sander (6" disc/4" belt) for sale as he recently acquired a 12" disc sander. His old ShopSmith is kept configured for bandsawing and tablesawing as he owns two dedicated lathes (a Jet Mini and a Powermatic 3520) as well as a free standing drill press, scroll saw, mitre saw, and planer. His safety goggles and a face mask hang conveniently on his lathes.

(cont. on next page.)



Mike with Carved Bowl



He made a thin parting tool from a junk store butcher knife and ground off the cutting edge for safety (commercial ones are upwards of \$40).

He has both a microwave oven and personal computer at the planning desk in his shop – the oven comes in handy for hot drinks and drying bowls and the computer for finding ideas and searching tool catalogs on the internet.

A second hobby of Mike and his wife Terry is the



Planning Desk w. Microwave

production of beer and wine from kits purchased locally – rather tasty wine, in fact! No wonder he turns wine bottle stoppers. Mike also serves on the Newsletter Committee of the MSWG.

He currently stores his wood blanks on the concrete floor of his shop but is eyeing some additional space on metal shelving in their adjacent garage.

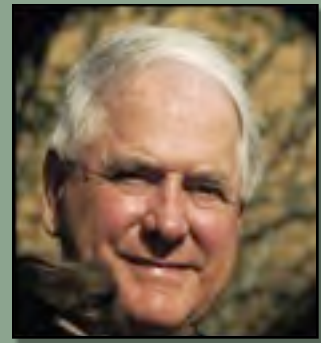
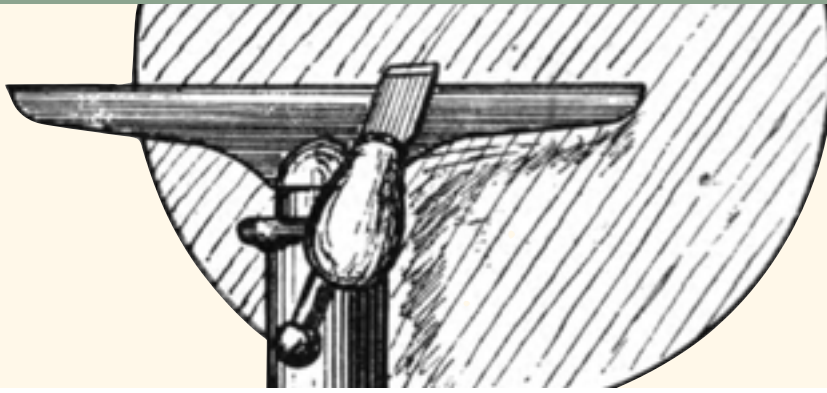


Thin Parting Tool Made from Butcher Knife

Be sure to dull former edge



5" turned, carved bowl



# WOOD SPIN

## SENSATIONAL WOODTURNING

by: Emmett Manley

Sight, touch, smell, hearing, and taste. The five basic senses as identified by the ancient Greeks (we won't get into the modern addition of several more). Of these senses, we usually think of woodturning as being, almost entirely, a visual process. Obviously, the appearance of wood is a critical component of woodturning and we need to see in order to make the cuts and shape the profiles. But the other senses can be involved.

Woodturners employ their sense of touch more often than is generally appreciated. The human hand can easily detect the difference in the thickness of one sheet of paper and that of two sheets of paper. This amazing tactile sensitivity can be employed in many ways in the woodturning shop. In addition to checking a bowl wall for consistent thickness, one can detect lumps and bumps, raised grain, rough area, inclusions and the like. You can often feel what you cannot see.

Our sense of touch can also provide feedback relative to the temperature of the wood we are working, as elevated temperature due to vigorous sanding can result in cracking and should be avoided. Whether a piece of wood is moist or dry can often be estimated by our sensitive fingers. The ultimate woodturning application of our sense of touch is to check for the smoothness of our turnings. I have one 3/8" spindle gouge with a handle of the smoothest wood (in this case, cherry) I have ever encountered and I reach for that tool more often than warranted, just because I like to feel the wood.

Our other senses are restricted to specific organs in specific areas of the body (eyes, ears, tongue, and nose) but touch related receptors are skin based and thus exist throughout the body. Pain detection may be considered a special form of touch and a lot could be written about the importance of pain detection in helping people avoid damage

to their bodies. Let's don't go there but just appreciate the value of mechanisms which cause us to jerk our hand away when the first nick occurs from a spinning piece of wood, or quickly drop a hot tool coming off the sharpening wheel.

It has long been a shop principle -- when you hear something different, it is usually bad, so stop whatever you are doing and evaluate the situation. It may be that your wood has become loose in your chuck and is about ready to take flight, or that your tool rest has slipped and is now making a very decorative (?) groove in your nearly finished bowl. Thus, our sense of hearing often provides another layer of protection from all those shop demons that are ready to pounce.

Hearing may also help us distinguish dry wood from wet wood, solid wood from "punky" wood, and even aid in the identification of wood species. Dry wood banged

(cont. on next page.)

together and responding with a metallic ring is one indication that you are dealing with osage orange, or black locust, or perhaps honey locust.

Do we use our sense of smell in the world of woodturning? We should. There are woods I enjoy turning and some I tend to avoid, due, to some extent, in differences in their aromas. Now, don't confuse wood aroma with irritation of the nasal mucosa or the lungs -- some woods harbor irritating chemicals which can both directly irritate tissue and/or establish antibodies which can subsequently respond with allergic reactions of varying intensities.

Returning to our sense of smell -- I look forward to the fragrance of certain woods as they are released on the lathe: the citrus aroma of magnolia, the mustard of osage orange, the black pepper of persimmon, the syrup of sweet gum, even the fermented aroma of black locust.

Many woods seem aroma neutral -- the oaks, hickories, elms, many fruit trees, even wonder tree Bradford pear -- and my sense of smell does not get involved. Cedar possesses a wonderful aroma, but, unfortunately, cedar is also irritating to me so I don't turn much of that wood. Walnut has a pungent distinctive aroma, but it, too, is rather irritating to me. Realize that aroma and irritation

potential are not necessarily related.

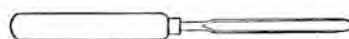
Tasting is the least used sense in the world of woodturning, but I may employ it to assist in distinguishing woods or identifying trees. For example, sassafras has both a distinctive aroma and taste and I often use my sense of taste in confirming this wood.

Woodturning really is sensational.

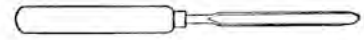
### A LITTLE HUMOR "LITTLE LARRY"



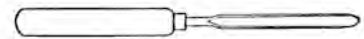
Little Larry attended a horse auction with his father. He watched as his father moved from horse to horse, running his hands up and down the horse's legs and rump, and chest. After a few minutes, Larry asked, 'Dad, why are you doing that?' His father replied, 'Because when I'm buying horses, I have to make sure that they are healthy and in good shape before I buy. Larry, looking worried, said, 'Dad, I think the UPS guy wants to buy Mom ...'



The math teacher saw that Larry wasn't paying attention in class. She called on him and said, 'Larry! What are 2 and 4 and 28 and 44?' Larry quickly replied, 'NBC, FOX, ESPN and the Cartoon Network!'



Larry's kindergarten class was on a field trip to their local police station where they saw pictures tacked to a bulletin board of the 10 most wanted criminals. One of the youngsters pointed to a picture and asked if it really was the photo of a wanted person. 'Yes,' said the policeman. 'The detectives want very badly to capture him. Larry asked, 'Why didn't you keep him when you took his picture?'



Larry watched, fascinated, as his mother smoothed cold cream on her face. 'Why do you do that, mommy?' he asked. 'To make myself beautiful,' said his mother, who then began removing the cream with a tissue. 'What's the matter, asked Larry 'Giving up?'



AAW MEMBERSHIP

# PRESIDENT'S CORNER

by: **Bob Speier**

## BOARD OF DIRECTORS FOR 2010

President  
**BOB SPEIER**

1st V.P.  
**KEITH BURNS**

2nd V.P.  
**JOEL BENSON**

Secretary  
**LONNIE EPPERSON**

Treasurer  
**MATT GARNER**

Librarian  
**JOHN WILLIAMS**

Members at Large  
**MIKE MAFFITT**  
**KEN WALLS**  
**SKIP WILBUR**

Webmaster  
**TREY CAMPBELL**

Newsletter Editor  
**BOB SPEIER**

## MSWG SURVEY

As I mentioned at our last meeting there is a new survey for you to fill out. This survey will provide the board information about what you want to see in future demonstrations, vital information in keeping our meeting interesting and up to date.

PLEASE take the time to fill out the survey, it'll only take a very few minutes. Don't let a few have all the influence, do the survey today and let your desires be known.

Below is the link to the survey.

Thanks for your help,

Bob

<http://www.surveymonkey.com/s/JCMRZJJ>

Great news, AAW has setup a new type of membership for those that would like to receive the "Journal" online instead of by mail, remember you're getting six issues now. The AAW membership is \$38 instead of the \$48 General Membership. Another great way AAW is trying to encourage chapter members to join AAW. If this meets your fancy click on this link and join today.  
<http://www.woodturner.org/org/mbrship/>

Have a Great Day , Bob

## LOCAL SUPPLIERS

### **COLCO FINE WOOD & TOOLS**

2631 Jackson Avenue  
Memphis, TN 38108-3319  
(901) 452-9663

### **HARDWOOD INCORPORATED**

200 Progress Road  
Collierville, TN 38017-2716  
(901) 853-4317

### **THE WOODWORK SHOP, INC.**

8500 Wolf Lake Dr. #101  
Bartlett, TN 38133  
901-755-7355  
[www.thewoodworkshopinc.com](http://www.thewoodworkshopinc.com)



## THANKS

I want to thank everyone for their help in making our meeting on Saturday a success. It's that kind of effort that makes the Mid South Woodturners Guild the great chapter we are.

Sincerely, Bob



# THE COBBED WEB

## Segmented Woodturning

by: Mike Maffitt

For anyone who attended the Malcolm Tibbetts demonstration in 2009, our eyes were opened to a whole new world of woodturning. Segmented Woodturners are the type of people who can't wait for March 14th to roll around so they can celebrate "Pi Day". Malcolm claimed the cosmos were going to line up on March 14th, 2015 because it will be the complete 3.1415 to the 10 thousandth place. Isn't it amazing what makes some people tick?

This month we are digging in to find some information on segmented woodturnings and woodturners. Let's jump right in and see if we can come up with the right angle.

### Websites with plans and videos:

Design your first segmented project in 5 minutes with the Segmented Project Planner. Plus free plans, hints & tips, wood costs and more. <http://www.segmentedturning.com/>  
Woodturning Online, A nice site with and Introduction to Segmenting, Project Plans, Tools and Jigs and much more: [http://www.woodturningonline.com/Turning/segmented\\_turning/index.html](http://www.woodturningonline.com/Turning/segmented_turning/index.html)

### Instructions:

A Malcolm Tibbetts Handout: <http://www.woodturner.org/resources/Tibbetts%20Handout.pdf>  
<http://www.oceanwoodturners.com/segmented%20wood%20turning.htm>  
Segmenting Biz, A nice Chevron Vase Project illustrated: <http://segmenting.biz/>  
Kevin's Woodturnings, A great site with a huge amount of information: <http://www.turnewood.com/>  
A Staved Goblet project: <http://woodgoblets.com/>

### Videos:

Google Videos: Search Term: Segmented Woodturning  
Yahoo Video: Search Term Segmented Woodturning

**A Special Segmented Chapter of the AAW:**  
<http://www.segmentedwoodturners.org/>

(cont. on next page.)



**Segmented Turner's Sites:**

Malcolm Tibbetts: <http://www.tahoeturner.com/gallery.html>

Bill Robinson's Site: <http://www.segmentedwoodturner.co.uk/>

Juergen Uhrig's Site: <http://juergenuhrig.com/>

Jim Rodgers, Designs in Wood: <http://jlrodders.com/index.html>

Jon Swenson's site: <http://www.jonswenson.com/>

Glen Crandall's Site: [http://www.medicinemangallery.com/bio/glen\\_Crandall\\_wood-turning.lasso](http://www.medicinemangallery.com/bio/glen_Crandall_wood-turning.lasso)

Russell Brown: <http://pages.swcp.com/~rgbrown/>

I love looking through all the gallery sites. If you don't understand how something is built or constructed, study it until you begin to take in intricacies you didn't notice before. All will come to light in good time Grasshopper.

**Gallery Sites:**

Bob Pritchard's site: <http://www.outofcontrol-woodturning.com/>

DNV Turnings: <http://www.dnvturnings.com/>

Gavin's Bowls <http://gavinsbowls.tripod.com/>

Kestrel Creek: <http://www.kestrelcreek.com/>

Fred's Woodturnings: <http://www.fredswoodturnings.com/>

The Woodpecker's Workshop: <http://www.flisespikkeriet.biz/>

Master Wood Creations: <http://www.masterwoodcreations.com/Seg.html>

**Books For Sale:**

Amazon has a wide variety of books on the subject: [Amazon.com](http://Amazon.com)

Crafts Supplies: <http://www.woodturnerscatalog.com/>

**Software:**

Segmented Turning Software: <http://www.woodturnerpro.com/>

**Forums:**

Wood Heap: <http://woodheap.com/forum/forumdisplay.php?f=11>

Wood Heap: <http://www.woodheap.com/forum/forumdisplay.php?f=11>

**Articles:**

Woodworker's Journal Ezine: [http://www.woodworkersjournal.com/Ezine/Articles/Malcolm\\_Tibbetts\\_A\\_Segment\\_of\\_Woodturning\\_\\_7222.aspx](http://www.woodworkersjournal.com/Ezine/Articles/Malcolm_Tibbetts_A_Segment_of_Woodturning__7222.aspx)

Ezine article on Stave Constructions: <http://ezinearticles.com/?Stave-Construction&id=550791>

Turning and Open Segment Vase: <http://ezinearticles.com/?Woodturning-an-Open-Segment-Vase&id=2973054>

**Links:**

Woodturning Design Links: <http://www.woodturningdesign.com/information/links.shtml>

Segmented Woodturning Links: <http://www.public.iastate.edu/~rwallace/WTlinks.html#Segmented>

You can never cover all the information out there but I hope these links keep you busy for the next couple of weeks perusing through them all. Maybe you too will become excited about "Pi Day".

Happy browsing.

# MARCH MEMBERSHIP MEETING MINUTES

by: Lonnie Epperson



**March 27th 2010**

## Call to Order (43 members present)

27-March-10 MSWG Membership meeting was called to order by President Bob Speier at 9:00 a.m. and Mr. Speier welcomed our visitors. We had one visitor, Eulene, wife of Charles Smothers.

This was Bill Kern's first meeting. He is the one who contributed the camphor wood that some of the members received.

A motion was made by Richard Hiller to correct the meeting times in the previous meeting minutes. This motion was seconded by Ray Tanner.

## Financial Report:

Matt Garner, Treasurer reported MSWG

- Education Fund balance \$1,698.59
- General Fund \$3,943.54

Motion and approval by Dwayne Love and Ray Tanner.

A motion was made to wipe out the AVI fund of \$427.93. This was approved by a majority of the members attending.

## April Meeting

The April meeting will be a 2-day event presented by Jimmy Clewes. For those attending only during the regular meeting time there will be no charge. Otherwise, members will have a \$20 charge for both

days and non-members there will be charged \$30 for 1 day and \$50 for 2 days.

## EOG GRANT

\$1000 grant has been approved. We will receive two installments, one for \$800 and the remaining \$200 after additional documentation has been provided.

## COMMITTEES

Library:

John Williams has updated the library. Information has now been logged into a folder. For easier access.

Lonnie Epperson and Mike Maffitt will be working on converting the library to be viewable from the website. Questions were raised as to possible copyright problems. This will need to be checked out.

## 2010 Membership Renewals:

Bob Speier reminded the members to re-new membership dues.

Some members still have not paid their dues. March is the deadline to re-new or become inactive.

## Possible By-law change

Research and input is requested from the membership into what is needed for progression to the presidency.

(cont. on next page.)

**MWSG Board Meetings:**

Joseph Voda asked if board meetings are open to the membership. The answer is, Yes. All members are encouraged to attend but there would be no voting rights.

**Harvest Festival:**

Bob Speier asked for two people to do demos at the Harvest Festival which will held at the Memphis Zoo on September 25. It was reported that you would be able to sell pieces of work there also.

Note:

This conflicts with the Bartlett Festival which is held at Freeman Park in Bartlett.

**MSWG Sponsors "Hands On" Mentoring Classes:**

The class held on March 13th was awesome according to President Speier. Future classes may go into more in-depth training.

**Survey:**

A new survey will be available shortly for all members to provide their input.

**Upcoming Demonstrations:**

April 17: Cliff Valentine is going to Holly Springs to turn a full size hat.

April 24-25: Jimmy Clewes

May 22: Joel Benson - Threaded Lidded Boxes

July 26: Keith Burns – Easy Wood Tools

Respectfully submitted – Lonnie Epperson

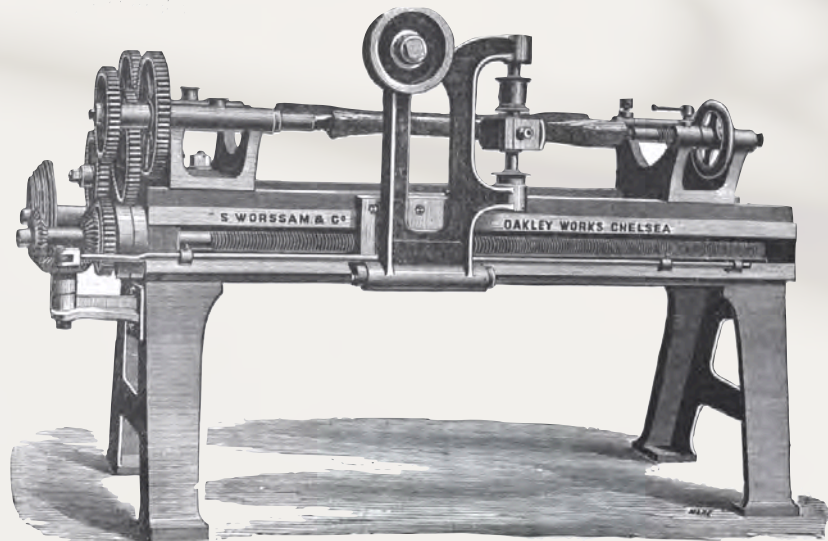


Fig 103. COPYING LATER.

# USING WHAT YOU GOT

by: Ray Tanner

I began assembling pens using a drill press and it works ok but sometimes the pen slips out of line and the attachment goes in awry – this can destroy the brass tube. It is tricky to lower the chuck gently but firmly and hold the parts in proper alignment.



Next, I turned one piece of plastic (nylon) with a concavity on one end and a tenon on the opposite end to fit snugly into my lathe's tailstock: I turned another piece with a small nipple in the center to fit into a chuck on the headstock (hardwood, polyethylene or polystyrene will work also). The turned pen section and piece to be pressed into it are nicely aligned by this nipple and concavity and the whole assembly may be rotated by hand (to check alignment) as the tailstock wheel is advanced to press the pieces together – this is my favorite method.



A nut cracker which has an offset lever, much like the commercial pen assemblers, with concavities on both facing parts works ok, though the parts are metal and may scratch the pen parts. Some modification is required to press the mechanical movement into the lower pen barrel once the tip is installed as that is a longer assembly than normal nut lengths.



Wiley Patterson (MSWG member) uses an arbor press mounted on his shop wall with hardwood inserts to prevent damage to the turned barrels and pen kit parts.



Commercial pen assembly tools are available from most all of the wood turning suppliers and are adjusted for length by addition of thick wooden or plastic shims – all that I have seen are very similar but I suspect they work no better than your own lathe, as described above.



Finally, in the March, 2010, issue of "Turner's Talk" there was a home-made pen assembler pictured in the article by Mike Maffitt. It is very similar in design and operation to the commercial models.

# 2010 UPCOMING DEMONSTRATIONS & EVENTS

- **April 24th and 25th**
  - Jimmy Clewes
- **May 22nd**
  - Joel Benson - Threaded Lidded Boxes
- **May 28th**
  - Richard Raffan - Nashville - See next page for important information concerning this event.
- **June 18th**
  - 20th AAW Symposium - For Information Follow This Link  
<http://www.woodturner.org/sym/sym2010/>
- **June 26th**
  - Keith Burns - Turning Hollow Forms with the Easy Wood Tools
- **July 24th**
  - Members Demo - Chucking
- **September 17-19**
  - The Georgia Associations of Woodturners Presents: Turning Southern Style XVI



Glen Alexander demonstrates a segmented bowl at The Woodwork Shop on March 13th, 2010.

# 2010 UPCOMING DEMONSTRATIONS

## Richard Raffan comes to Nashville

Richard Raffan began turning wood in England in 1970 at the age of 26, after a successful career in the London wine trade. He has earned his living turning wood ever since. Although largely self-taught he soon established himself as a leading figure in the hand-crafts revival, and since the early 1970s his work has been acquired for public and private collections across the world. Today Richard is probably the world's best-known woodturner, famous as a bowl and box maker, as teacher and demonstrator and author of classic woodturning books and videos. Tens of thousands of woodturners learned the craft from Raffan's *Turning Wood*, *Turning Boxes*, *Turning Bowls*, *Turned Bowl Design*, *Turning Projects*, *Taunton's Complete Illustrated Guide to Turning*, and *The Art of Turned Bowls*. Since the late 1970s Raffan has been a major technical and artistic influence on woodturning worldwide collections.



The Tennessee Association of Woodturners will sponsor a week with Richard Raffan May 24-29, 2010. This is a once in a lifetime opportunity to take a class with one of the world's premier woodturners.

The following classes are still available at Woodcraft in Franklin, TN:

**Monday, May 24** - Hands on classes with Richard Raffan - \$250.00 per person

**Friday, May 28** - Demonstration day with Richard Raffan - \$35.00 per person

**Saturday, May 29** - Hands on classes with Richard Raffan - @250.00 per person

These classes will fill up fast – to guarantee your spot please call the Woodcraft store at 615-599-9638

# MARCH DEMO

# MIKE ZINSER



On March 27th we were entertained by Mike Zinser who is President of the Tennessee Association of Woodturners. Mike, who intended to demonstrate platters, found out after reading our newsletter that we expected him to demonstrate offset platter turning. Being a skilled craftsman, this was not a problem except he had only completed one offset platter previously.

Way to step up to the plate Mike! A fantastic job turning and we appreciate your willingness to go the extra mile to accommodate the offset turning request.



# INSTANT GALLERY MARCH 2010



Glen Alexander



Tom Dorough



Tom Dorough



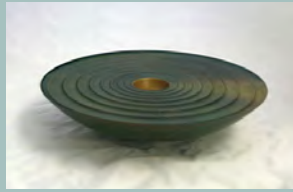
Tom Dorough



Lonnie Epperson



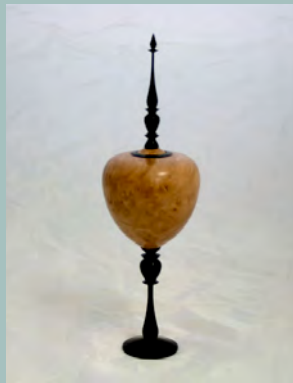
Lonnie Epperson



Joan Kelly



Joan Kelly



Mike Maffitt



Bill Shaw



Bill Shaw - Kudzu Pen



Bill Siler



Bill Siler



Jim Tusant



Cliff / William Valentine



Skip Wilbur



Skip Wilbur



Mike Zinser



Mike Zinser



Mike Zinser



# April 2010 AAW Board Letter

Message from: Binh Pho



## Artsy and Conventional

I am in my second year on the board now, and this is my second newsletter. In my first newsletter last year I expressed my excitement about the POP (Professional Outreach Program) rotations at the Albuquerque symposium and I promoted the POP program with much enthusiasm. The AAW was offering new opportunities for our members. But I was caught by surprise with responses from a few members at large who said that they were not interested in the POP program and might not attend the symposium as a result. This, despite the many other rotations packed with woodturning and plenty of wood chips flying.

Admittedly I am an artsy kind of guy. I love all forms of art, but most of you probably don't know that I still teach the beginner class in Chicago. I always begin the class with spindle turning, then follow it with sharpening and bowl turning. That is where we all start. But do we stop here? Half of my beginner students have joined the Chicago Woodturners Chapter; some stay at the intermediate level, but some have become very good and want to go further. I also demonstrate and teach surface design around the world-it's just a fancy name for the artsy stuff that we can apply to the surface of our turnings so we can transform a bowl to a piece of art. Ironically, in this surface design class I get many students who are beginners.

The AAW is the biggest craft organization in the world. It consists of a diverse group of people with many skill levels and a variety of different needs. The most obvious benefit for an AAW member is the journal, but in my opinion the thing that makes the AAW such a world-class craft organization is our willingness to share our techniques. This spirit of sharing seems to occur more in woodturning than in any other medium. Without this sharing our journal would be very thin indeed with little new material, our symposiums would have far fewer rotations, and we wouldn't be at 13,600 members and counting. Sharing the technique of turning a salad bowl is done in the same spirit as sharing the techniques of embellishing it; we do not separate artsy and traditional woodturning.

I view the AAW as inclusive, not an organization of them and us! We can all enjoy our sharing spirit and be happy and have fun at the symposium. The truth is that the beginners, the intermediates, the hobbyists, the production woodturners, the artsy folks, the professionals, and the collectors all make the AAW possible and we all have a place in the symposiums and in the journal. The AAW is a very big tent, and we strive to make sure there is plenty room and excitement in it for everyone. The beginners need someone to teach them the skills and something to look forward to; the professionals need to teach classes to make a living; the artsy need to be there to inspire the hobbyists and the intermediates.

(cont. on next page.)

A good reflection of this diversity is our EOG (Educational Opportunity Grant) auction. The work is assembled from all across the membership, from different skill levels. The proceeds go directly into the EOG fund and to POP and are given out the following year to members who need the money to improve their skills. In turn recipients help and give back in the future. The AAW awards on average \$70,000 per year to members; the POP awards money, too.

But there is always a way that we can better share the same sandbox. As part of the POP, I am proud to introduce two new initiatives this year at the symposium: the Emerging Artist Program, and Intimate Critique Sessions.

### Emerging Artist Program

This program provides a demonstration opportunity within the AAW membership for emerging artists having the potential to be significant contributors to the woodturning field. It recognizes merit and provides invitees with a platform for possible future demonstration opportunities, plus possible publication in the journal.

The Emerging Artists demonstration area will be inside the entrance to the Instant Gallery (IG) room—a great location. The artists selected by the committee are Pascal Oudet (France), Nick Agar (UK), David Belser (NH) and Tucker Garrison (NC). They will have a special table nearby for their IG. Each will do a two-hour demonstration, showcasing the techniques and processes for which they were selected. Demonstration times are 3-5 pm on Thursday during registration and IG set-up, plus Friday, Saturday, and Sunday lunch breaks.

### Intimate Instant Gallery Critiques

Jerry Kermode is organizing Intimate Instant Gallery Critiques to be held on Friday and Saturday during the first half of the lunch break. Attendees can choose to have one of their pieces discussed in a small group setting. Up to fifteen people can bring one object to a table for an intimate, up-close discussion. Moderators will

be present. Signup sheets will be available in the Instant Gallery.

Subjects and moderators are: hollow forms with David Ellsworth, surface treatment with Jacques Vesery, natural edge with Jerry Kermode, anything goes with Jim Keller, sculptural work with Betty Scarpino, and segmented work with Curt Theobald.

I hope to see you in Hartford!

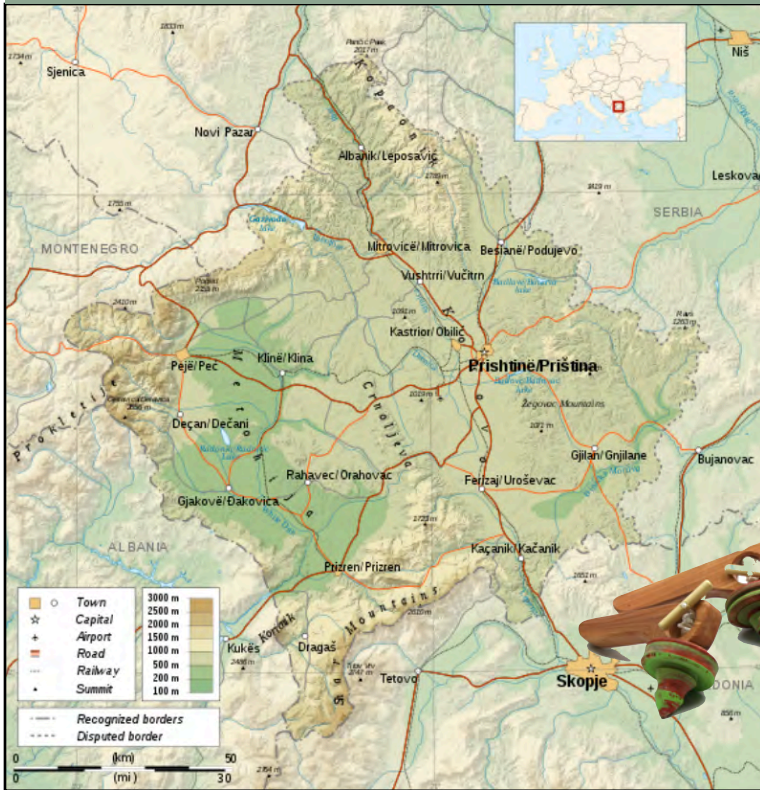
**Binh Pho**

AAW Board Member, binh@woodturner.org



# PROJECT KOSOVA

## TURNED TOYS FOR GIFTS



In March 2009 the MSWG members agreed to turn some items that could be handed out by missionaries in Kosova.

Kosova is a disputed territory in the Balkans which is recognized as an independent territory by 65 UN countries and China (Taiwan). There is a distinct hatred by one of their neighboring countries, Serbia, which disputes Kosova's independence. The native language is Albanian.

Brian Gibson, missionary friend of Mike Maffitt, was excited to discuss options of woodturned items that could be given to children in the areas he was ministering.

These items will be shipped out in April of 2010. Thanks to all the MSWG members who participated in turning items for this worthy cause.



# HELPFUL TIPS



## Spalt Your Own Lumber: Nutrient Supplements for Spalted Wood (e.g. beer)

By Sara Robinson

Fine Woodworking Magazine

Ah yes, the internet, the place that gives us such a variety of information. From research to conjecture to just plain silly (spalted wood will kill us all!), if you search long enough, you can find just about anything. Something that has caught my eye recently is the number of 'recipes' that exist for spalting wood. There is obviously some interest in this subject, so let's break it down with a little science.

Beer - its not just for drinking!

Apparently, some feel this beverage is perhaps better suited for spalting. Most sites seem to be in agreement that the beer must be poured over the wood, although I did find one that suggested drinking the beer, then urinating on the wood. While pouring the beer over the wood certainly won't hurt anything, its not really doing anything either (except costing you money, and wasting your beer). There's nothing special about the sugars in beer, and the wood, and this is important now, doesn't need anything added to it. If you take a look around, nature does just fine decaying wood without a handy helper.

But wait! Doesn't it speed the spalting process? The answer is, sadly, probably not. Pigment fungi are the fungi that use the surface sugars as their dietary basis, but then, so too do the molds. You're just as likely to encourage some dangerous mold fungi as the pigment fungi and really, its not going to speed things up nearly

as much as just keeping the wood in a warm room.

In fact, pouring anything sugary over the wood has the possibility of causing a longer spalting incubation time. Stay with me here. White rot fungi, the fungi that cause bleaching and zone lines, cause that bleaching by removing lignin (part of the 'structure' of wood). Lignin is slightly pigmented, so its digestion lightens the wood. White-rot fungi aren't going to go after the hard food (lignin) if there is tons of easy food (sugar) around. Hence, until all that sugar is used up, you're not going to get lignin digestion, and therefore, not going to get bleaching.

Beer conclusion: drink it yourself, the fungi don't need it

# American Association of Woodturners

Message from: Kurt Hertzog



If you are not currently a member, I'd like to take a few moments of your time to inform you about the benefits of membership.

There are many individual benefits of being an AAW member. One of the premier benefits is the American Woodturner publication. Recently, the AAW put the entire archive of the American Woodturner on our website. This vast resource is available to the membership at will. We'd like to have you experience this benefit. We have a temporary page for non-members to use to enjoy this new member benefit.  
<http://www.woodturner.org/products/aw/WholeIssues/index.htm>

There is now an "electronic" version of AAW membership. Since the entire archive and future editions of the American Woodturner magazine will be present on the website, new members can opt for a membership without the hardcopy journal being mailed to them. You can find the membership opportunities at <https://www.woodturner.org/Member/MemberSignup.asp>.

If you are interested in this green effort, select the "online" membership option for \$38.

Another new benefit of membership is the periodic drawings. Currently, there is a monthly drawing from the membership for a group of very exciting prizes. These drawings will continue all year and are planned for the future as well. We also have a year end Grand prize drawing for a Powermatic lathe. You can see the details on these drawings at <http://www.woodturner.org/org/mbrship/drawings.htm>.

I think you'll agree that there are even more benefits to being an AAW member. Recently we have added vendor discount program. We want to help get our 13,600 + members in touch with vendors who support our non-profit organization, by encouraging vendors to offer our membership exclusive discounts and other incentives to buy the products they offer. If you have any questions, please feel free to contact me or ask your local chapter contact. We'll be glad to answer any questions you may have.

There are many other benefits to membership they are listed here, please take a look at the comprehensive list of the benefits of membership.

## Benefits of AAW Membership

- Six issues of American Woodturner
- Marketing opportunities on our website for artists, collectors, galleries and museums
- Group rates for health, life and commercial business insurance (US members only)
- AAW members are covered by the chapter liability insurance AAW provides to local chapters.
- Ability to demo at chapter events and shows.

(cont. on next page.)

- Merchandise discounts at many suppliers, and savings of up to 50% on AAW merchandise, including project books, DVDs, logo apparel and more!
- Access to Educational Opportunity Grants
- AAW Forum and member-only access to articles and resources at [www.woodturner.org](http://www.woodturner.org)
- Ability to vote in AAW board elections if a member prior to the end of August.
- Eligible to apply to be a member of the Professional Outreach Program (POP)
- Exhibit opportunities
- Annual International Woodturning Symposium
- Covered by the AAW provided local chapter liability insurance. To be covered for bodily injury insurance for chapter demonstrations or events
- Access to apply for demonstration opportunities at AAW Symposiums
- AAW Resource Directory contains a complete listing of contact information of our members, Local Chapters, demonstrators, and woodturning resources. Updated listings are available to members on our website. A printed directory is published biennially
- Local AAW Chapters. Over 325 local chapters offer workshops, camaraderie, opportunities to share ideas and techniques, and access to lending libraries, discounts, and volume purchases.
- Access to all past issues of American Woodturner through the Members Only Area
- Access to machine-readable American Woodturner issues for those members who are visually impaired, and use computer screen reading software - contact the webmaster if this applies to you.

Thanks,  
Kurt

[kurth@woodturner.org](mailto:kurth@woodturner.org)

# THE 2010 AAW SYMPOSIUM

Friday June 18 through Sunday June 20, 2010  
HARTFORD, CONNECTICUT at the [Connecticut Convention Center](#).

The Annual AAW symposium is the highlight of the woodturning year. We meet in a different location each year, rotating throughout the regions of the continental United States. The symposium has become the most attended woodturning event in the world.

Each symposium features three days of woodturning demonstrations and meetings. These are lead by numerous talented experts:

- Internationally known woodturners
- The highest quality woodturning instructors
- Knowledgeable local talent

Multiple rotations are held simultaneously so the attendee has many different types and styles of woodturning demonstrations available. Many of the demonstrations are held multiple times so the attendee has the opportunity to attend sessions they may have missed.

Each symposium has had a unique flavor, but most of them have had the following features:

- A rotation schedule of more than 100 class-room type demonstrations and panel discussions, hosted by the world's best woodturning professionals.
- An instant gallery like no other on earth. This gallery includes pieces brought to the event by the attendees.
- A banquet in the middle of the weekend.

- Special interest night, where like-minded turners get together for some fun.
- An auction of tools, wood, and fine woodturnings. Funds from the auction fund scholarships for woodturning education.
- The largest woodturning trade show anywhere. This includes tool and lathe manufacturers, or their representatives as well as vendors of wood and other materials, and supplies related to woodturning.

*Please visit this link for more information*  
<http://www.woodturner.org/sym/sym2010/>



# Turning Southern Style XVI

The Georgia Association of Woodturners (GAW), dedicated to providing education, information and organization to those interested in woodturning, will be presenting its annual symposium, "Turning Southern Style XVI". This year's event will again be held at the Unicoi State Park and Lodge near Helen, Georgia on September 17-19, 2010.

GAW sponsors this annual event which features some of the world's leading woodturners and turning artisans.

## **This year's featured turners include:**

J. Paul Fennell, Alan Lacer, and Stephen Hatcher.

## **Also featured are:**

Nick Cook, Johannes Michelsen, Peg Schmid, and Dave Barriger.

## **Instant Gallery:**

The instant gallery will return as a favorite and we invite each participant to display up to four pieces of his/her work for all to enjoy.

## **Vendor Area:**

As always, the vendor area will be well stocked with tools, wood, and all other woodturning related supplies and equipment.

## **Saturday Night Dinner and Auction:**

Prior to our auction, there will be a banquet dinner on Saturday evening. As always, all proceeds from the auction support continuing education in woodturning through our scholarship program. We encourage all who participate in the symposium to donate a piece to our Saturday Night Auction to benefit the scholarship fund.

## **For Further Information:**

For additional information and pricing, please visit [www.gawoodturner.org](http://www.gawoodturner.org).

You are encouraged to register prior to August 1, 2010. Refunds for cancellations will be given up to September 1, 2010. Registration may be limited, so act quickly.

## **To register:**

Visit [www.gawoodturner.org](http://www.gawoodturner.org). Print and complete the registration form and mail it, along with your check, to:

Georgia Association of Woodturners  
c/o Harvey Meyer  
5174 Waterford Drive  
Dunwoody GA 30338

If you would like a brochure, visit [www.gawoodturner.org](http://www.gawoodturner.org) or contact: Harvey Meyer, Symposium Chairman  
The Georgia Association of Woodturners  
[symposium@gawoodturner.org](mailto:symposium@gawoodturner.org)





We have a widow friend who is downsizing and has a number of items for sale. All are in like new condition. They include:

**LT160 John Deere riding lawn mower, 42" cut Kohler Engine, 172 hrs. \$2,000**

**Delta 36-220 10" mitre saw, \$75**

**Black & Decker WorkMate 400 bench, \$60**

**Troy-Bilt Elect. Start Pony tiller, \$800**

**Pistol Grip grease gun, \$10**

**Tow behind broadcast spreader, \$40**

Many other items too numerous to mention.

Contact Swann Parks at 901-388-1412

**Delta 4" Belt / 6" Disk Sander.**

Works great. \$75.00

Contact: Mike Maffitt at:

Phone: 901-490-9938

email: [mcaffitt@yahoo.com](mailto:mcaffitt@yahoo.com)

