

Merry Christmas



Turner's Talk

Bob Speier, Editor

December 2007



What's Inside

Page 1

What's Coming Up

President's Corner

Page 2

General Meeting Minutes

Board Elections.

Page 3

Shop Talk

Page 4

Shop Talk, continued

Minutes, continued

Other are doing

Page 5

Symposiums

Page 6

Up Coming Events

Classifieds

Sponsors

Page 7

Tips & Helpful Ideas

Page 8

Where we meet

Page 9

Auction Items

What's Coming Up ?

By Joan Kelly

Wassail, wassail, all over the town,
Our toast it is white and our ale it is brown,
Our bowl it is made of the white maple tree,
With the wassailing bowl, we'll drink to thee.

-traditional carol

Has anyone turned a wassailing bowl from the white maple tree? If so, bring your work to the holiday brunch, which will be our December meeting on the 22nd of the month. Regardless, please plan to attend the MSWG annual Holiday Brunch on Saturday, December 22, 2007, at 10:00 AM at Gameday Sports Academy. We will share a pot luck brunch with the club providing turkey and ham. Spouses or special friends are welcomed and encouraged to attend. Along with your favorite dish for the pot luck, please bring a copy of the recipe. The recipes will be posted on the website for aspiring cooks and hosts. Last year's celebration set a high mark for both food and camaraderie. Please plan to participate and continue this wonderful tradition for MSWG.

Instead of the usual raffle, we will hold an auction for some significant items turned over the past year during our programs. The proceeds from this auction will be the seed from which we hope to grow a significant savings account whose sole purpose will be to finance bringing in recognized expert turners to do teaching and demonstrating for our guild. This auction will include the Christmas ornament done by Joan Kelly and Larry Sefton which won third place in the AAW competition last year. Also up for bidding will be the hollowform that Travis Stinson made in July, the piece donated by Binh Pho in Aug. as well as the finished pieces from the Octoberfest competition done by Keith Burns and Joan Kelly. Bring your checkbooks, because there may be a few additional surprises as well!

Continued on pg #9

President's Pick



Joan Kelly & Larry Sefton

Mid South Woodturner Guild Board of Directors For 2007

President

Cassandra Speier

First V.P.

Keith Burns

Second V.P.

Joan Kelly

Secretary

Bob Speier

Treasurer

Matt Garner

Board Members

Bob Hobbs

Larry Sefton

Webmaster

Trey Campbell

Newsletter Editor

Bob Speier

The Mid South Woodturners Guild is a proud chapter of the
AMERICAN ASSOCIATION OF WOODTURNERS



Presidents Corner

By *Cassandra Speier*



The custom of a Christmas tree, undecorated, is believed to have begun in Germany, in the first half of the 700s.

The earliest story relates how British monk and missionary St. Boniface was preaching a sermon on the Nativity to a tribe of Germanic Druids outside the town of Geismar. To convince the idolaters that the oak tree was not sacred and inviolable, the "Apostle of Germany" felled one on the spot. Toppling, it crushed every shrub in its path except for a small fir sapling. Legend has it that Boniface, attempting to win converts, interpreted the fir's survival as a miracle, concluding, "Let this be called the tree of the Christ Child." Subsequent Christmases in Germany were celebrated by planting fir saplings.

The success of Christmas tree in Protestant countries was enhanced by a legend, which attributed the tradition to Martin Luther himself. It is a widely held belief that Martin Luther first added lighted candles to a tree. Walking toward his home one winter evening, composing a sermon, he was awed by the brilliance of stars twinkling amidst evergreens. To recapture the scene for his family, he erected a tree in the main room and wired its branches with lighted candles. German immigrants first brought the Christmas tree to America in the 17th century. The Pennsylvania Germans initiated the Christmas tree custom in America. And it was when in December 20, 1821, Matthew Zahm of Lancaster, Pennsylvania, wrote in his diary about local Christmas trees and the myriad decorations that the now famous trees received their first mention in the New World.

As 2007 rolls to a close and a new board will begin in just a few weeks, I want to thank

MSWG MEETING MINUTES November, 2007

President Speier called the meeting to order at approximately 9:15 am. She thanked the members in attendance and welcomed guests Joseph Barnes, William Vansciver, Warren Wurzburg and David Chandler. Joseph Barnes later joined as a member of MSWG.

President Speier asked for an approval of the previous meeting minutes posted in the newsletter. A motion was made and seconded.

Bob Speier told the members of the income and expenses for the month. He also provided them with an account balance of \$1808.83 as of 11/13/07 however did mention it was not a reconciled balance due to the statement not being available prior to the time of the meeting.

Bob also told the members membership renewals would be excepted until all were collected.

President Speier and Larry Sefton told the members of the facility available at the Bartlett Community Center. Larry explained the advantages of the new facility and why it was being considered. Discussion was held and a vote was asked for. The vote to move future meetings to the Bartlett Community Center was unanimous. Notice would be given to GameDay and the January meeting would be held at the Bartlett Community Center.

Cassandra told the members that Dennis Paullus had repaired the club Jet lathe. Dennis was thanked for he help.

Bob Speier told the members of the idea by Richard Holt to have the member's pictures on the club roster. Don Wilcut suggested the pictures be put on the website with members access only. Bob indicated that was a good idea and told the members he would work out the details with Trey Campbell the Webmaster. Pictures would be taken at the Christmas Party.

Cassandra talked about the Christmas Party in December and encouraged members to attend. The members were informed of the Potluck Brunch, Raffle and the Silent Auction that would be held to help raise money for the education and demonstration fund.

President Speier provided the members with the slate of nominees, Dennis Paullus, Don Wilcut,



Shop Talk *By Bob Speier*

at Johnny Johnson's

On one of the first rainy days we've had I was joined by Don Wilcut to visit with Johnny Johnson at his home in Kirby Pines. Man were we impressed with the facility. Johnny's pretty proud of the place as well 'cause he took us on a turn of the main building to show us what was available. There's a bank, post office, beauty salons and barbershop, places to eat, library and computer room and arts and craft facilities to say the least. As I said, pretty impressive.



Johnny got interested in woodworking in the late 40's believe it or not but not seriously until he moved to the Memphis area in 1963. He belonged to the Club hosted by both the turners and the woodworkers until the turners rebelled and started their own club. As so many, he credits much of his talents to Dana Curtis a Charter Member .

Johnny was a pilot during WW2 and flew just until recently. He told us the most fun he had flying was when he got interested in flying ultra lites around Lakeland TN. Go figure!

He got the reputation for turning the clock finales by being associated with the local Clock Builders Club, which introduced him to a local clock manufacturer. John Williams and Johnny go way back for that reason.



Johnny and John W. as it turns out turn on the same Delta DL 40 lathe. The story goes John W. found out Delta had dumped a whole slue of lathes in a dumpsite. He couldn't stand that so he went and picked 'em up. Many turners are turning on the results of his efforts.

Johnny has a mill he uses to help repair parts for the many projects he's asked to fix around Kirby Pines. At 87 he got tired turning the crank to move the sled so he rigged it to a power drill (see photo). Now that's ingenuity. He almost has this Hobby Shop to himself but considers that his biggest disappointment because he can't get other residents involved. They're not as young as he is. You know how we woodworkers like our camaraderie.



Thanks so much Johnny for your genuine hospitality

MSWG MEETING MINUTES
November, 2007 continued

Rick Gillespie and Steve Yeoman, for the board positions available and asked for a motion to except the nominees as presented. The motions was made and seconded and a unanimous vote was taken. Cassandra informed the members the 2008 Officers would be presented at the Christmas Party.

The meeting was then turned over to Club Member, Rick Gillespie. Rick provided a fine demonstration on turning hollowed Christmas Ornaments.

The meeting was concluded at approximately 11:15 am. After cleanup the raffle was held downstairs.

Submitted by Bob Speier
Secretary, MSWG

President's Corner *con't*

our board members who are retiring. To Keith Burns, Joan Kelly and Bob Speier thank you for all you've done. These three members exemplify the definition of service. They have dedicated countless hours to thinking about, planning for and working tirelessly on behalf of MSWG. Through their leadership and efforts over the last two years we've had great demonstrations both local and professional, improved videography, great photos for the newsletter, bigger and better newsletter, and a great website that really shows off our club. In addition to all this, we have embarked on path of community involvement with our project for Hope House. Finally our greatest success was the 'Beneath the Bark' exhibit at The Ross Gallery – Christian Brothers University. This was a simply extraordinary public display of the very best MSWG has to offer. It was a huge success and, I believe will lead to bigger and better public recognition for the club. So, please take a few minutes while at the next meeting to say "Thanks" to our three members who have worked so hard!



What other Members are doing

We all know Keith Burns can turn but can he sell his wares. Well, he participated in the Desoto County Community Arts Counsel Craft Show and did pretty well, so he says. The coup de



grace was he won Best Booth in the show even with an injured hand. I really think his wife Judi did all the work. I saw this booth in person folks and it was awesome.

* * * * *

Bill Shaw down in Oxford Mississippi spent a couple of days at Ol' Miss and walked away smilin'. You are the man Bill.

* * * * *

Joan Kelly hit her selected shows and then had an Open House and invited who knows who to attend so she could sell her beautiful turnings. Joan co-hosted the event with another person in another art field. What a great idea Joan.

* * * * *

Pink Palace was all the better when Dennis Paullus, Rick Cannon and Brad McCullum showed up. Rick even won a Merit Award.

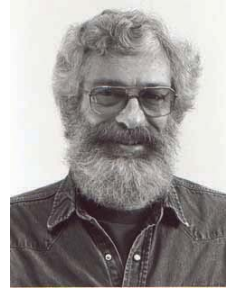
TAW 20th Annual Symposium

January 25-26, 2008!

TAW Symposium in Nashville, TN at the [Radisson Opryland Hotel](#).

(Call (615) 889-0800 and Ask for the Special TAW Symposium discounted room rate)

The Demonstrators for the 2008 TAW 20th Annual Symposium are:



Andy Woodard

Ernie Conover

David Ellsworth

Nick Cook

If you have any questions or need assistance in registration for this Symposium, please call Ray Sandusky at 615-300-0363 between the hours of 9:00AM and 8:00PM. or [TAW website for registration](#)



Featured Demonstrators for the 2008 Florida Symposium

Alan Lacer Michael Hosaluk Lyle Jamieson Mark St Leger
 Emory McLaughlin Dave Barriger Al Caton
 Carl Schneider Dixie Biggs Don Geiger Gene Gross
 Franck Johannesen Ken Thurman

January 11- 13, 2008
 At Lake Yale near Eustis, Florida

<http://floridawoodturningsymposium.com/>

The Mid South Woodturners Guild is a not-for-profit organization formed to promote and encourage the art of woodturning and, in doing so, promote and encourage the art and craft of woodturning in general. Membership is open to anyone.

Classifieds

For Sale: 60" **Oneway Bed Extension** with Leg. Fits both the Oneway 20" and 24" Lathes with 44" spindle height. Mint condition. Lathe and duplicator shown in photo not included. New retail is \$995.00. Asking \$600.00. Contact Keith Burns: Daytime 774-8830, evenings and weekends 853-6219 or email: keithandjudi@earthlink.net



* * * * *

Original Nova Chuck - Solid Body - for 1" x 8 tpi headstock spindle. Equipped with a set of #2 jaws, spanner wrenches, and screw center. Great starter chuck. \$75 Contact Emmett Manley 372-2023

UPCOMING EVENTS

December 22nd @ 10:00 am

Christmas Party / Pot Luck
Last meeting at GameDay

2008

- January* * *New location at Bartlett Community Center*
- * *Three Legged Stool by Joan Kelly*
- February* *Segmented Bowl - Rick Cannon*
- March* *Ring Master Machine - Rick Gillespie*
- April* *2nd Annual Swap Meet*

Thanks to our Sponsors

CRAFT SUPPLIES USA
— THE WOODTURNERS CATALOG —

www.woodturnerscatalog.com/



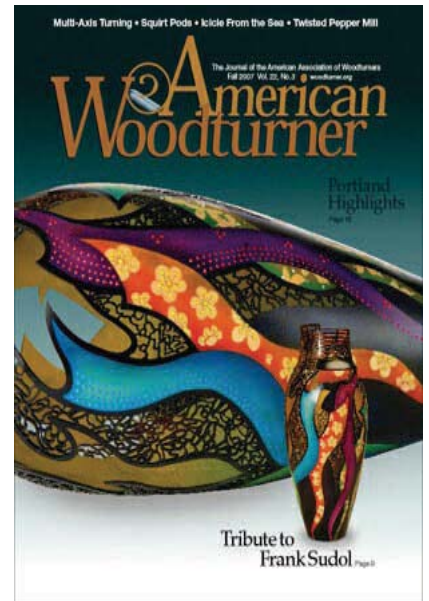
www.packardwoodworks.com/

MSWG Lathe and chucks are made by



THE WOODWORK SHOP, INC.
Professional Tools, Fine Hardwoods & Custom Woodwork

8500 Wolf Lake Drive Suite #1



Tips & Helpful Ideas

Recently I've been getting a catalog that caters to car enthusiasts. Like most, unless it's a woodworking or food cat., I toss it in the recycle bin. But this month I leafed through the Griot's Garage cat. and found a couple of items I thought were worth passing on to the members of MSWG.

Fire is always a big concern when involved in woodworking what with the rags full of combustible liquids or, the more common concern, combustible dust floating around the shop. In most cases we do what we can and move on. Some may have a fire extinguisher in the shop but you have to be home to use it. The extinguishers below may help solved the problem. I don't have one YET but will soon. This is not a paid advertisement just a product I thought might be of interest to the members of MSWG.



<http://www.griotsgarage.com/>

Or

1 800 345-5789

FIRE EXTINGUISHERS THAT PROTECT YOUR LOVED ONES EVEN WHEN YOU'RE NOT THERE

For those of us that worry about a garage fire and seeing our loved ones burn to the ground while we're working on them, or having them catch on fire when we're not around because of some silly electrical short, I have the solution to prevent an extremely sad outcome. Factor in losing your life's collection of tools, unique parts, memorabilia or your entire home and the cost of these unmanned extinguishers is a small pittance for the protection and peace of mind they deliver. Simply attach one of these unmanned extinguishers to the ceiling or wall and when the room reaches a pre-determined temperature they'll go off automatically. The large ceiling mounted extinguisher has an overall height of 17" and 9 5/8" in diameter, weighs 34.5 pounds, of which 26.4 pounds of the weight is type A-B-C rated multi-purpose dry powder and propellant. This unit releases the dry powder when the room reaches a temperature of 155° F. The wall mounted extinguisher has an overall height of 14 3/4" and 4 5/16" in diameter, weighs 10.3 pounds, of which 6.6 pounds is dry powder and propellant. Release temperature on this unit is 175° F. Both have a sprinkler type valve that distributes powder in all directions. Have one above every car, over parts washer, wine cellar, laundry room, furnace room, tool shed, basement storage, over your spare gas cans, attic area for electrical fires, etc. Both units include the mounting brackets. Ceiling extinguisher needs to be mounted into a stud or beam due to the weight. The wall mounted unit is light enough to mount anywhere. Add \$10.00 to normal shipping charges due to size and weight.

New Meeting Place in January '08

Bartlett Station Municipal Center

5868 Stage Rd.

(next to the railroad track)

Starting in January The Guild will meet at a new location in Bartlett. You'll find it in the same general area as our last meeting place in Bartlett near the railroad tracks that cross Stage Rd.. The address is above and to the right on the billboard sign.

The move is good for some and bad for others but one of the important things is the face of the Mid South Woodturners Guild. The facility is new, clean and has elevators. It presents well for the Guild.



The picture on the left shows our entrance. Please excuse the construction which should be done by April. The entrance is located on the East side of the Center. Enter the door and walk straight to the elevators. Go to the second floor. Please bare with us on the raffle as we haven't decided on how we're going to handle it as yet.

The Guild needs to be out of GameDay by the end of December or sooner (after the Christmas Party). The board really needs your help in making this move. A date and time has not been decided as yet but PLEASE let Larry Sefton or Bob Speier know if your willing to help. It can not and should not be done by a few members of the board alone. PLEASE HELP

Larry@sefton.info or robtspeier@aol.com
901 377-2693 901 756-9315



Binh Pho

*Some of the Auction
Items*



Travis Stinson Joan Kelly Keith Burns



Joan Kelly & Larry Sefton

**Sorby Christmas Ornament
hollowing set from Holmes Phillips**

Pen Kits

Donation from Sandi & Bob Speier

**Don't be left out in the cold, make a
donation and warm up the kitty.**